

Knapsack Electric Sprayer

User's Manual

Model: SX-LIS05A, SX-LIS06A, SX-LIS08A

SX-LIS05B, SX-LIS06B, SX-LIS08B

SX-LIS05C, SX-LIS06C, SX-LIS08C

SX-LIS05D, SX-LIS06D, SX-LIS08D



I. Structure and Features

Structure: This electric sprayer is composed of a tank, a diaphragm pump, a lithium battery, spraying parts (tube, spray boom, sprayer nozzle, and switch), etc.

Features: ① Designed to be capable of being easily carried either on shoulder or by hand. ② Comes with a Micro water pump of compact size, light weight and high efficiency contributing to time-saving and labor-saving operation without manual pumping. ③ Powered by an environment-friendly and energy-saving 12v 2.2AH lithium battery to enable continual operation for up to 2 hours. ④

The humanized-design locking/unlocking label on the handle allows convenient operation for user. ⑤ The spray boom clamp is fixed on the spray boom to facilitate taking and attaching of the spray boom. ⑥ Multi-nozzles are available to cater for various demands of users.

II. Main Technical Parameters

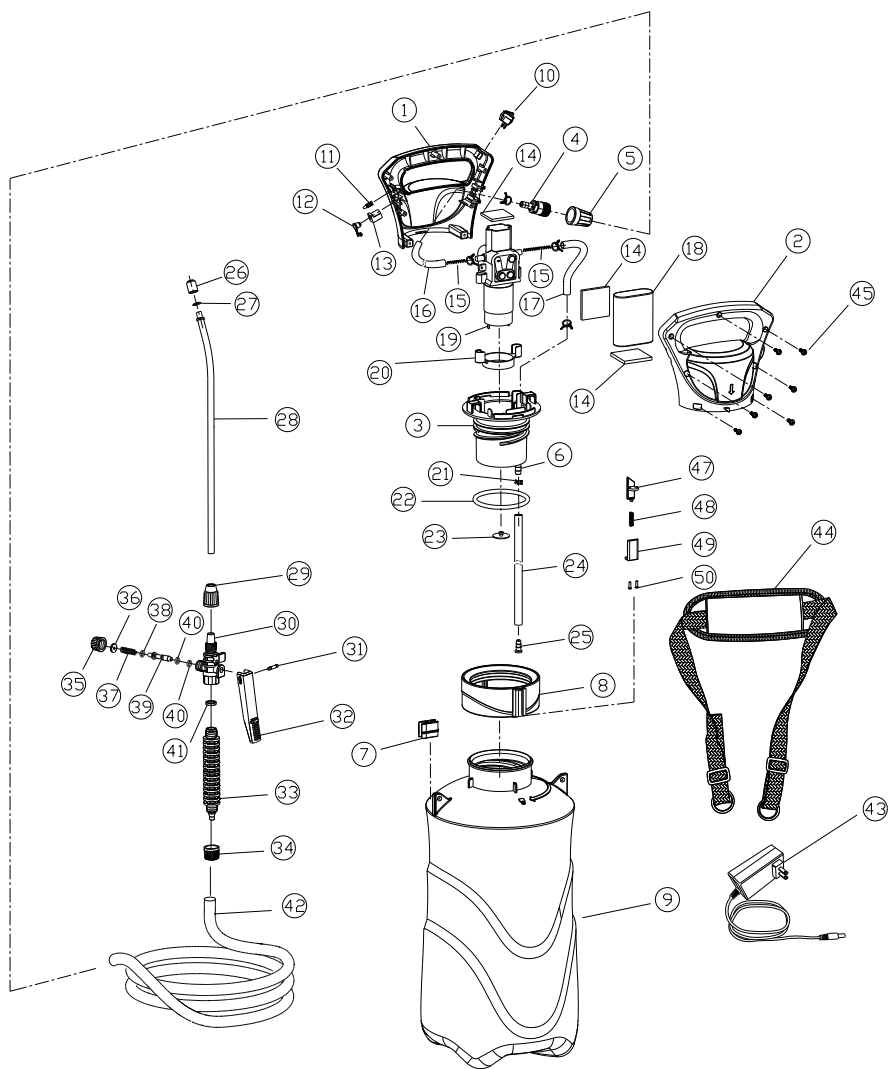
Model		SX-LIS05A	SX-LIS06A	SX-LIS08A
Tank Capacity		5L	6L	8L
Overall Dimensions		205×205×428	205×205×458	205×205×545
Net Weight		1.74kg	1.77kg	1.9kg
Pump	Type	Micro water pump		
	Working Pressure	1.6-2.0 Bar		
	Working Current	0.8-1.1 A		
Nozzle Flow		0.3-0.5L/Min		
Max. Horizontal Range		≧4M		
Battery	Model	12V 2.2Ah High-capacity lithium battery		
	Working Hours	Continual operation for up to 2 hours after one full charging		

Model		SX-LIS05C	SX-LIS06C	SX-LIS08C
Tank Capacity		5L	6L	8L
Overall Dimensions		208×208×396	208×208×426	208×208×511
Net Weight		1.74kg	1.77kg	1.9kg
Pump	Type	Micro water pump		
	Working Pressure	1.6-2.0Bar		
	Working Current	0.8-1.1A		
Nozzle Flow		0.3-0.5L/Min		
Max. Horizontal Range		≧4M		
Battery	Model	12V 2.2Ah High-capacity lithium battery		
	Working Hours	Continual operation for up to 2 hours after one full charging		
Model		SX-LIS05D	SX-LIS06D	SX-LIS08D
Tank Capacity		5L	6L	8L
Overall Dimensions		208×208×406	208×208×436	208×208×521
Net Weight		1.83kg	1.86kg	1.99kg
Pump	Type	Micro water pump		
	Working Pressure	1.6-2.0Bar		
	Working Current	0.8-1.1A		
Nozzle Flow		0.3-0.5L/Min		
Max. Horizontal Range		≧4M		
		12V 2.2Ah High-capacity lithium battery		

Model		SX-LIS05B	SX-LIS06B	SX-LIS08B
Tank Capacity		5L	6L	8L
Overall Dimensions		208×208×438	208×208×468	208×208×553
Net Weight		1.83kg	1.86kg	1.99kg
Pump	Type	Micro water pump		
	Working Pressure	1.6-2.0 Bar		
	Working Current	0.8-1.1 A		
Nozzle Flow		0.3-0.5 L/Min		
Max. Horizontal Range		≧4M		
Battery	Model	12V 2.2Ah High-capacity lithium battery		
	Working Hours	Continual operation for up to 2 hours after one full charging		

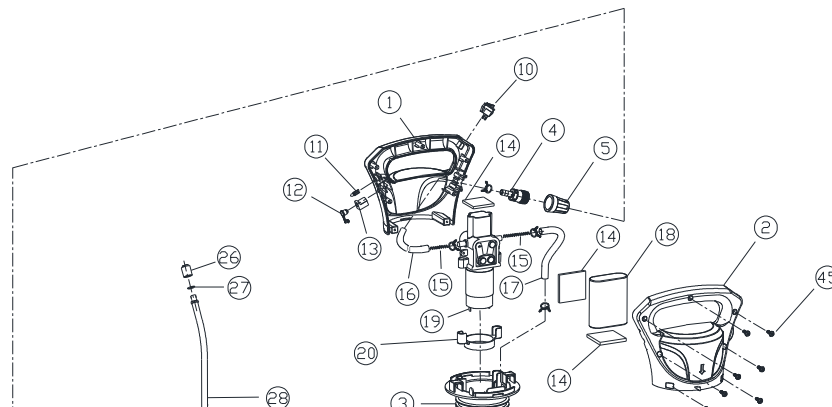
III. Structural Diagram and Detailed List

SX-LIS A/C Series Structural Diagram



S/N	Description	Qty	S/N	Description	Qty
1	Front-cover	1	26	Nozzle cap nut	1
2	End-cover	1	27	Spray nozzle O-ring	1
3	Triple threaded seat	1	28	Stainless-steel spray boom	1
4	Outlet connector	1	29	Sprayer boom cap	1
5	Outlet cap	1	30	Switch body	1
6	Inlet connector	1	31	Switch pin	1
7	Spray boom clamp	1	32	Press plate	1
8	Trim cover	1	33	Switch handle	1
9	Tank body	1	34	Plastic tube cap	1
10	Water-proof switch	1	35	Switch nut	1
11	LDE light	1	36	Switch seal ring	1
12	Charge port plug	1	37	Switch spring	1
13	Charging base	1	38	Valve plug O-ring I	1
14	Foaming rubber belt	3	39	Valve plug	1
15	Stainless-steel spring	2	40	Valve plug O-ring II	2
16	Outlet hose	1	41	Handle seal ring	1
17	Inlet Pipe	1	42	Plastic tube	1
18	Lithium battery	1	43	Charger	1
19	Motor pump	1	44	Strap component	1
20	Cushioning pad	1	45	Self-tap screw	7
21	Spring tab	1	46	Tab	4
22	Φ74*5 O-ring	1	47	Spring fastener	1
23	Air-seal pad	1	48	Spring	1

SX-LIS B/D Series Structural Diagram



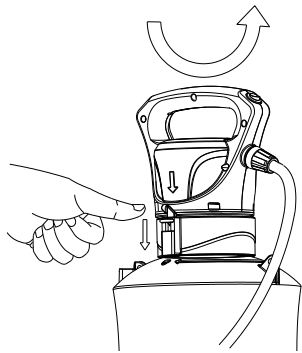
S/N	Description	Qty	S/N	Description	Qty
1	Front-cover	1	27	Spray nozzle O-ring	1
2	End-cover	1	28	Stainless-steel spray boom	1
3	Triple threaded seat	1	29	Sprayer boom cap	1
4	Outlet connector	1	30	Switch body	1
5	Outlet cap	1	31	Switch pin	1
6	Inlet connector	1	32	Press plate	1
7	Spray boom clamp	1	33	Switch handle	1
8	Trim cover	1	34	Plastic tube cap	1
9	Tank body	1	35	Switch nut	1
10	Water-proof switch	1	36	Switch seal ring	1
11	LDE light	1	37	Switch spring	1
12	Charge port plug	1	38	Valve plug O-ring I	1
13	Charging base	1	39	Valve plug	1
14	Foaming rubber belt	3	40	Valve plug O-ring II	2
15	Stainless-steel spring	2	41	Handle seal ring	1
16	Outlet hose	1	42	Plastic tube	1
17	Inlet Pipe	1	43	Charger	1
18	Lithium battery	1	44	Strap component	1
19	Motor pump	1	45	Self-tap screw	7
20	Cushioning pad	1	46	Tab	4
21	Spring tab	1	47	Spring fastener	1
22	Φ74*5 O-ring	1	48	Spring	1
23	Air-seal pad	1	49	Spring base	1

IV. Inspection and Operation

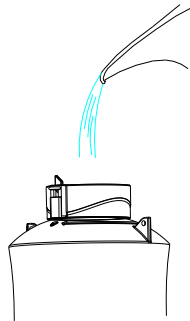
1. Inspection

First check the appearance to make sure it's sound upon unpacking.

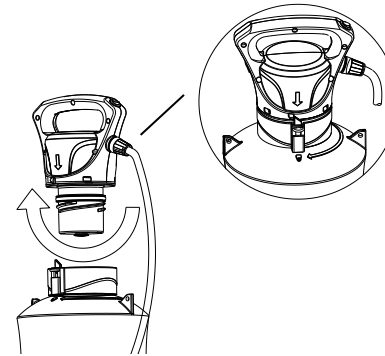
2. Basic Operation Diagram



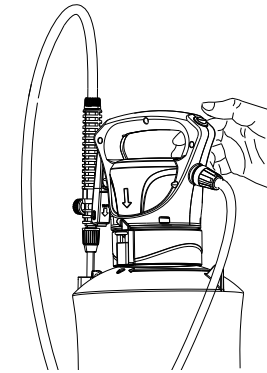
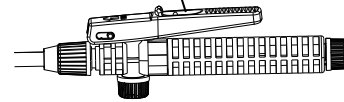
① Press the spring lock with your fingers, and turn the nozzle body anticlockwise to remove it.



② Fill the tank with liquid and keep it below the Max. line.

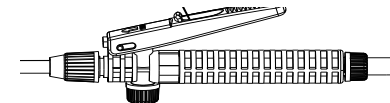


③ Rotate the handle body clockwise to ensure the body is stuck by the spring fastener and the arrow points at the lock sign. **Switch On** body is locked.

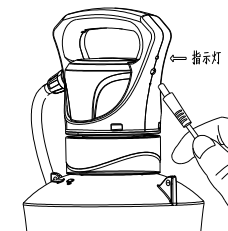
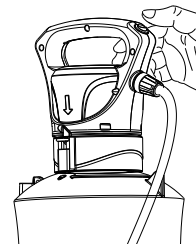


④ Press the power switch to start working.

Switch Off



⑤ Hold down the press plate and move it forward to lock the switch for continuous spraying; Move the press plate backward and release it when you finish spraying.



⑥ When the tank runs out of spray mixture and needs refilling, the pump switch must be turned off to prevent the pump from running idle.

⑦ In case of insufficient voltage, plug in the charger to recharge. The indicator light turns red when charging, and turns green when fully charged.

V. Precautions

1. Cut off the power between uses to avoid unnecessary power consumption.
2. In case of putting idle for a long time, please re-charge the battery once a month to extend the service life of battery.
3. Upon finish of charging, please disconnect the charging cable to

make contribution to energy-saving.

4. During operation in winter, anti-freezing measures may be taken to extend the service life.

5. Never spray such special fluid as strong acid, alkaline etc with this Sprayer.

6. Operation temperature scope: 0℃-45℃

7. Never aim the nozzle at a human or any object not allowed to be exposed to water.

VI. Cleaning and Maintenance

Cleaning:

- Wipe the external appearance of the sprayer with a dampened cloth.

※ Never immerse the sprayer in water or flush with water.

- The Sprayer is preferred to be kept inside the room away from

Problems	Causes	Solutions
Fail to spray water	1. Whether the power switch is put ON or not. 2. Whether the battery is low? 3. Whether the tank is empty?	Turn on the power Re-charge the battery. Fill the tank with water.
Insufficient spraying volume	1. Nozzle is blocked. 2. Suction tube is broken. 3. Strainer is blocked	Clean the nozzle. Replace the suction tube. Clean the strainers.
Fail to recharge.	1. USB charging cable is damaged. 2. Battery is damaged or expands.	Replace the USB charging cable Replace the battery.

direct exposure to sunshine, so as to extend its service life. Best in a dry place with ambient temperature of 0℃-45℃.

VII. Quality Warranty

The warranty rule follows relevant stipulations of state laws and rules.

Damage or loss due to incompliance with the operation instruction may void the warranty.

VIII. Troubleshooting

IX. Packing List

S/N	Description	Unit	Qty	Remarks
1	Knapsack Electric Sprayer	unit	1	
2	Charging Cable	pc(s)	1	
3	User's Manual	pcs	1	