

## **OWNER'S MANUAL**

### **PETROL LAWNMOWER**

#### **MODEL: ST53H**



**CAUTION:**

Read and follow all Safety Rules and Instructions before operating this equipment.



**Thank you for choosing the Sherpa ST53H Petrol Lawnmower**

To ensure that you get the best results from your lawnmower  
please read all safety and operating instructions carefully before  
using this product.

## **CONTENTS**

<b>1. Safety Messages</b>	<b>4</b>
<b>2. Assembly</b>	<b>5</b>
<b>3. Before Operation</b>	<b>8</b>
<b>4. Operation</b>	<b>9</b>
<b>5. Maintenance</b>	<b>13</b>
<b>6. Storage</b>	<b>18</b>
<b>7. Parts</b>	<b>18</b>
<b>8. Warranty</b>	<b>22</b>
<b>9. EC Declaration of Conformity</b>	<b>23</b>

## 1. Safety messages

Your safety and the safety of others is very important when operating this machine. We have provided important safety messages in this manual and on the mower. This information alerts you to potential hazards that could hurt you or others. Please read these messages carefully.

Of course, it is not practical or possible to warn you about all the hazards associated with operating or maintaining a lawn mower. You must use your own good judgment.

You will find important safety information in a variety of forms:

**Safety Labels** — on the lawnmower.

**Instructions** — how to use this mower correctly and safely.



**Important:** Read the instruction manual before using the machine.



**Danger of thrown objects.**

Keep other people at a safe distance while working




**Warning:** Remove the spark plug cable from the spark plug and read instructions before carrying out any repair or maintenance.



**Danger of cutting yourself.**

Blades in movement. Do not put hands or feet near or under the opening of the cutting deck.

**Safety Messages** — preceded by a safety alert  symbol and one of three signal words: DANGER, WARNING, or CAUTION.

 **DANGER**

You could be seriously injured if you don't follow instructions.

 **WARNING**

You could be seriously injured if you don't follow instructions.

 **CAUTION**

You can be hurt if you don't follow instructions.

Each message tells you what the hazard is, what can happen, and what you can do to avoid or reduce injury.

### General Conditions Of Use

- This machine is to be used exclusively for cutting natural grass. Never use the mower for any other purpose. Any other utilisation can involve danger for your safety and can involve damage to the mower.
- Persons under 16 years of age and persons who are not familiar with the user instructions must not use the mower.
- The user is responsible of the safety of other people in the working area. Keep children and domestic animals at a safe distance while the mower is in use.

- Before mowing, remove all foreign object from the lawn which may be thrown by the machine, stay alert for any foreign objects which may have been missed.

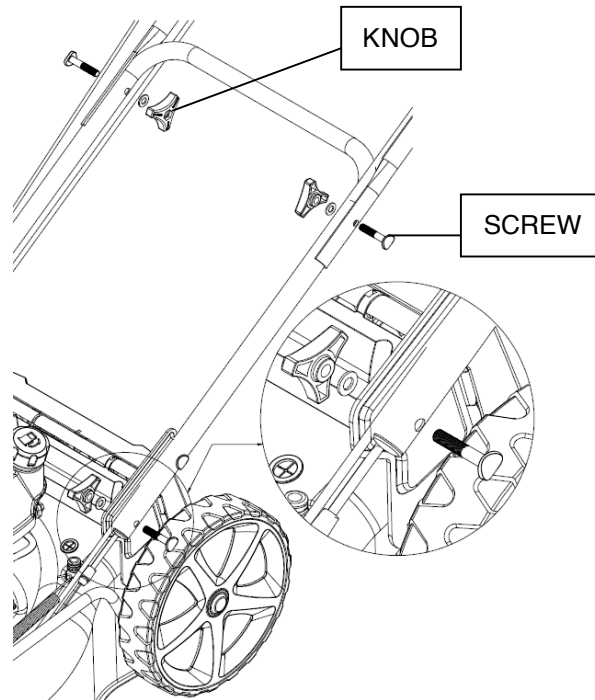
## 2. Assembly

### Unpacking

Remove lawn mower from packaging and check thoroughly for additional loose parts.

### Handle Setup And Height Adjustment

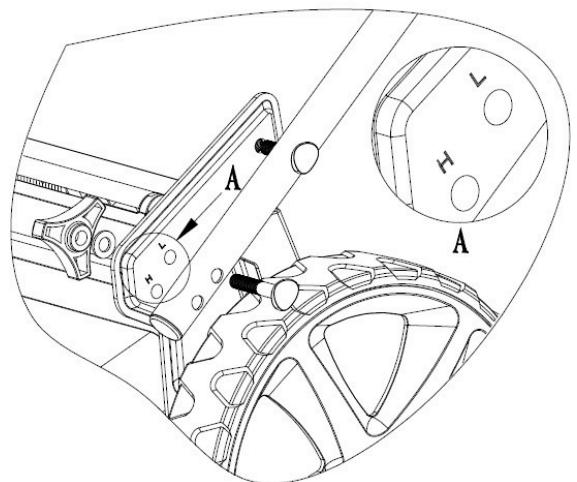
Open out the handle and screw the handles parts with the four screws and knobs.



If you want to adjust the height of the handle bar, you can choose the "L" or "H" hole in bracket.

Fix the handle bar with screws and knobs.

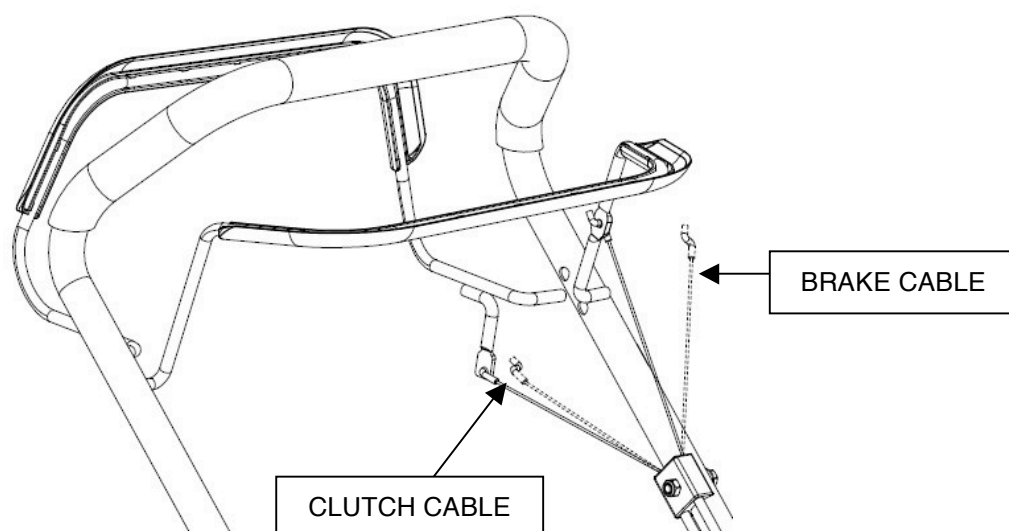
The "H" hole is high position of the handle bar, and the "L" hole is low position.

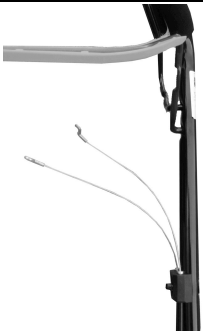





### Cable Setup

Insert the brake cable and clutch cable to the hole of the brake lever and clutch lever.

The brake lever is closest to the front of the mower, and it is pulled towards the user to operate. The clutch lever is furthest away from the engine, and is pushed towards the handle.



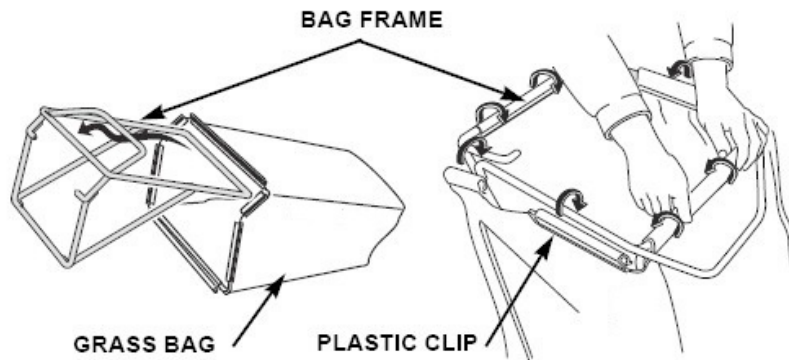
			
1. Cables will not be connected on arrival. They should look like this.	2. Pull the bar in to remove from locating hole.	3. Move the bar down slightly. Locate the cable end in the hole in the side of the bar.	4. Once the cable is attached to the lever, reinsert the bar to the hole in the handle.

Put the recoil starter on the right of the handle and fix the cable with the plastic collar.

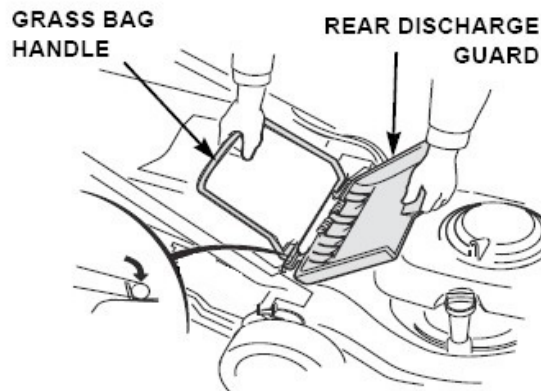
Pull the starter handle out slowly and thread the starter rope through the guide on the handle.

## Grass Bag Assembly

- Slide the grass bag frame into the grass bag and attach the clips as shown.

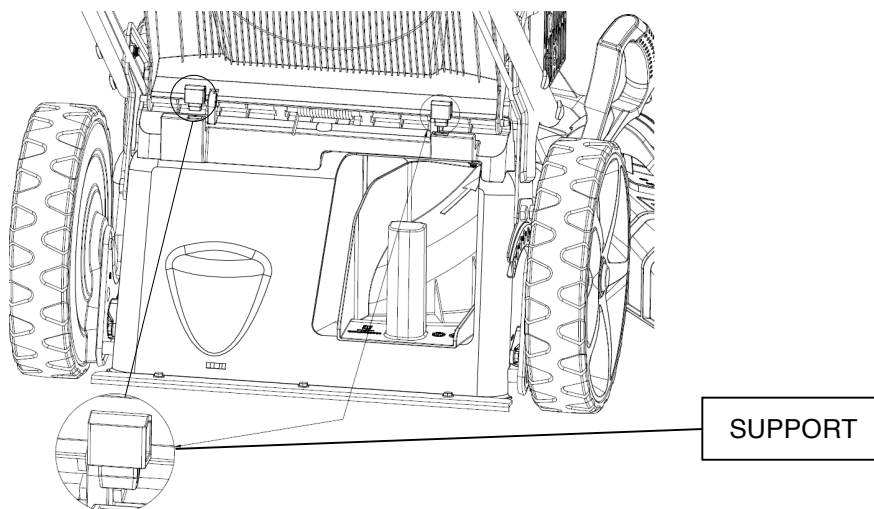


- Lift the rear discharge guard, remove the mulching plug, and install the grass bag.



## Rear Discharge Guard Supports

Take out the two supports from the packaging, and lift the rear discharge guard, install the two supports which can hold the rear discharge guard.



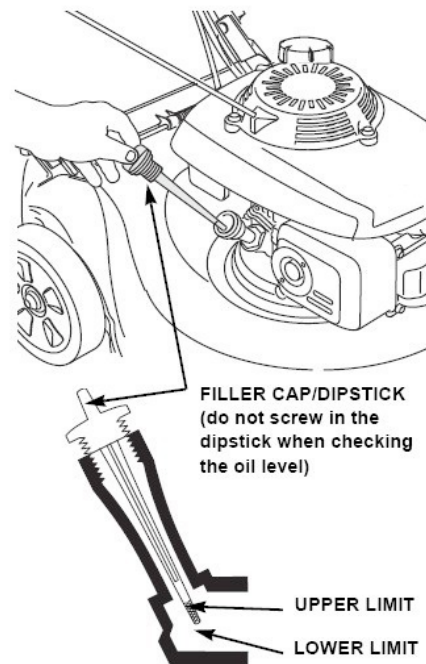
### 3. Before Operation

#### Engine Oil

The mower is delivered without oil in the engine.

All engines are run at the factory prior to packaging. Most of the oil is removed prior to shipment; however, some oil may remain in the engine. The amount of oil left in the engine varies.

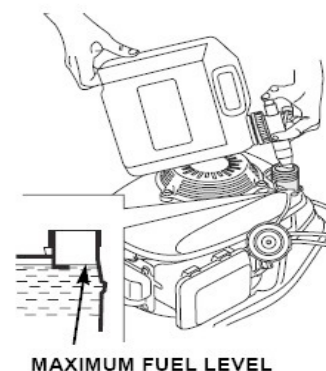
Add enough oil to bring the oil level to the upper limit mark on the dipstick as shown. Do not overfill engine with oil.



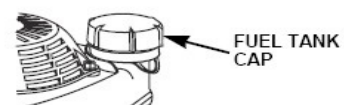
#### FUEL

**NOTICE:** Engine delivered without petrol. Fuel before starting the engine.

- Remove the filler cap
- Add fresh fuel treated with B3C Ethanol Shield into the fuel tank. Do not overfill. Wipe up any spilt fuel before starting the engine.
- Tighten the fuel tank cap.
- Turn fuel tap on.



**NOTICE:** Do not use fuel that you have had stored (in a fuel can or the fuel tank) for more than 30 days.





**WARNING**

**Petrol is extremely flammable. Petrol vapor can explode, causing serious injury or death. Use extreme care when handling petrol. Keep out of reach of children.**

Refuel in a well-ventilated area with the engine stopped. Do not smoke or allow flames or sparks in the area where the engine is refueled or where petrol is stored. Avoid repeated or prolonged contact with skin or breathing of vapor.

After refueling, tighten the fuel tank cap securely. If any fuel was spilled, make sure the area is dry before starting the engine.

## **4. Operation**

### **Instructions For Use**

- Check that all nuts, bolts and screws are well tightened.
- Before mowing place the grass catcher in its position.
- Before mowing make sure that the blade and the blade fixing screw are securely fastened. When blade cutting edges require re-sharpening, this must be done evenly on both sides so as to prevent any imbalance. If the blade is damaged, it must be replaced.
- When mowing always wear a long trousers and suitable strong footwear.
- Do not run the engine in an enclosed and/or poorly ventilated area. Emissions from the engine contains carbon monoxide, which is dangerous for your health.
- Work only when there is sufficient light.
- Do not use the lawnmower when it is raining or when the grass is wet.
- Particular precautions must be taken while mowing on slopes or banks. Mow across the face of slopes, never down or up.
- Never lift the rear of the mower while starting the engine and never place your hands and feet underneath the deck or into the rear discharge chute while the engine is running.
- Never change in any way the rated speed of the engine.
- Ensure the self-propelled system is disengaged before starting the engine.
- Never lift or carry the mower while the engine is running.
- Stop the engine in these cases:
  - Before any operation under the deck or the grass rear discharge chute.
  - Before any maintenance, repairing or checking operations.
  - Before carrying, lifting or removing the mower.
  - If you leave the mower unattended or changing the cutting height.
  - To remove and emptying the grass catcher.
  - After hitting a foreign object, stop the engine and check thoroughly the mower in order to see if it is damaged. Take the mower to an approved service centre to repair if necessary.

**WARNING**

**After you stopped the engine, the blade will continue to rotate for a few seconds**

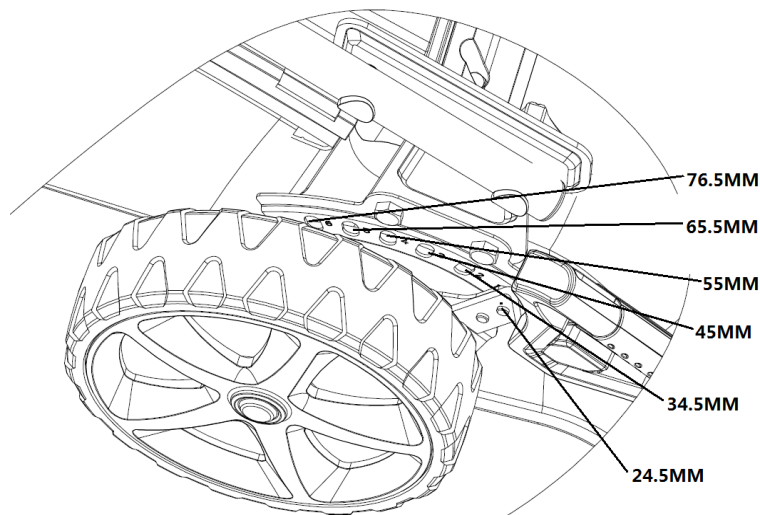
- If the mower vibrates in an abnormal way, take your mower to an approved service centre.
- Check regularly that nuts, bolts and screws are securely tightened for a safe use of the mower.
- Never tip the lawnmower on it's side.

• **PETROL IS HIGHLY FLAMMABLE**

- Keep petrol in a fuel can specially made for this purpose.
- Fill up the tank with a funnel, do the operation outside.
- Do not smoke around fuel.
- Fill up with fresh petrol and oil before starting the engine. We recommend using B3C Ethanol Shield in your fuel.
- Never open the cap of the fuel tank to add petrol while the engine is running or still hot.
- Do not start the engine if there is spilt fuel in the area, take the mower away from the area where petrol has been split and avoid any contact from a hot source.
- Tighten the fuel tank cap and close tightly the jerry can cap.

## Cutting Height Adjustment

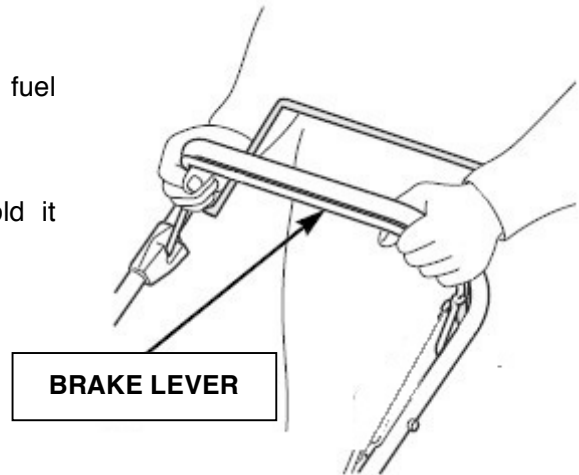
Check the cutting height settings, and make any necessary adjustments.

**WARNING**

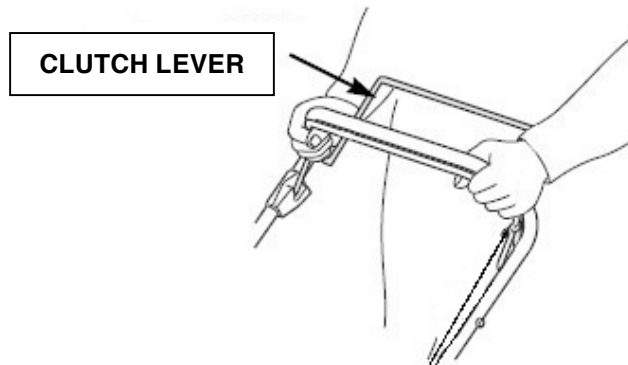
**The blade can cause serious injury. Stop the engine before adjusting cutting height.**

## Starting The Engine

- Ensure the engine is filled with oil and fuel correctly.
- Switch fuel tap on.
- Pull back on the brake lever and hold it against the handle.



- Release the clutch lever. This will prevent the mower from moving forward when you operate the starter.



- Take the starter handle with your right hand and pull slowly until you feel extra resistance, then pull energetically on the starter handle with starter rope through the support. You may need to repeat this operation 2 or 3 times. If the engine still does not start, consult the trouble shooting guide.



## Operation The Controls For Mowing

Blade is in action as soon as engine started. While the machine is working maintain the brake lever in the working position. The engine will stop as soon as you release the brake lever.

Release the lever to stop the engine whenever you need to leave the mower.

### Clutch Lever

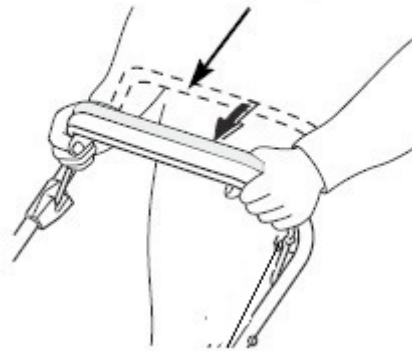
Push the clutch lever forward and hold it against the handlebar to propel the mower forward.

Release the clutch lever to stop the mowers forward movement. Release the clutch lever when turning the mower.

Never hold the clutch lever before starting the engine. If the clutch is engaged, the mower will move forward.

Operate the clutch lever with a quick and complete motion, so the clutch is either fully engaged or fully released. Hold the clutch lever against the handlebar during self-propelled mowing. This will help to extend the service life of the clutch mechanism.

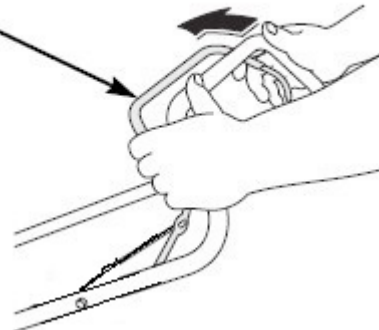
**CLUTCH LEVER**



### Stop Engine

- Release the clutch lever.
- Release the brake lever.

**BLAKE LEVER**



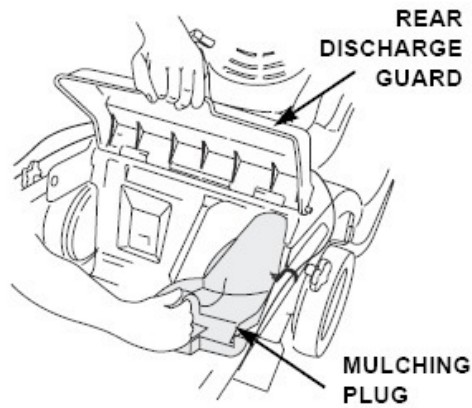
### **WARNING**

The blade will continue to rotate for a few seconds after the engine has stopped.

### Mulching Plug (Optional)

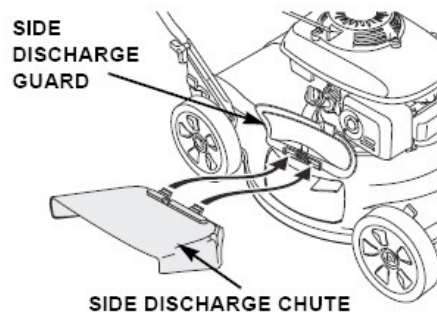
Install and remove the mulching plug by raising the rear discharge guard as shown. The plug only fits one way.

Remove the mulching plug when using a grass bag. The side discharge chute must be removed if mulching.



### Side Discharge Cover Assembly (Optional)

Lift the side discharge guard, install the side discharge chute. When discharging cuttings out the side of the mower, the mulching plug should also be installed.



## 5. Maintenance

**IMPORTANT** Regular maintenance is essential for the continued safety and performance of this lawnmower.

- Keep all nuts, bolts and screws tight to be sure the equipment is in safe working condition.
- Never store the mower with fuel in the tank inside a building where vapour may reach a flame or a spark or a source of extreme heat.
- Allow the engine to cool before storing in an enclosed space.
- To reduce the fire hazard; keep the engine, exhaust silencer and fuel storage

area free of grass, leaves, or excessive grease. Do not leave the grass box with grass cuttings inside.

- Do not use the equipment with worn or damaged parts. Parts are to be replaced and not repaired. Use genuine spare parts. Parts that are not of the same quality can damage the equipment and be dangerous for your safety.
- If the fuel tank has to be drained, this should be done outdoors and when the engine is cool.
- Wear strong work gloves when removing and reassembling the blade.
- Check the blade's balance after sharpening.
- Check the rear guard, side guard and grass-catcher frequently for wear and deterioration.
- Whenever the machine is to be handled, transported or tilted you must:

-Wear strong working gloves;

-Grasp the machine at the points that offer a safe grip, taking account of the weight and its distribution.

When tilting the machine for inspection or maintenance always tilt backwards onto the handles, or to the right. Never leave the machine on its side for more than 10 minutes.

## **Blade**

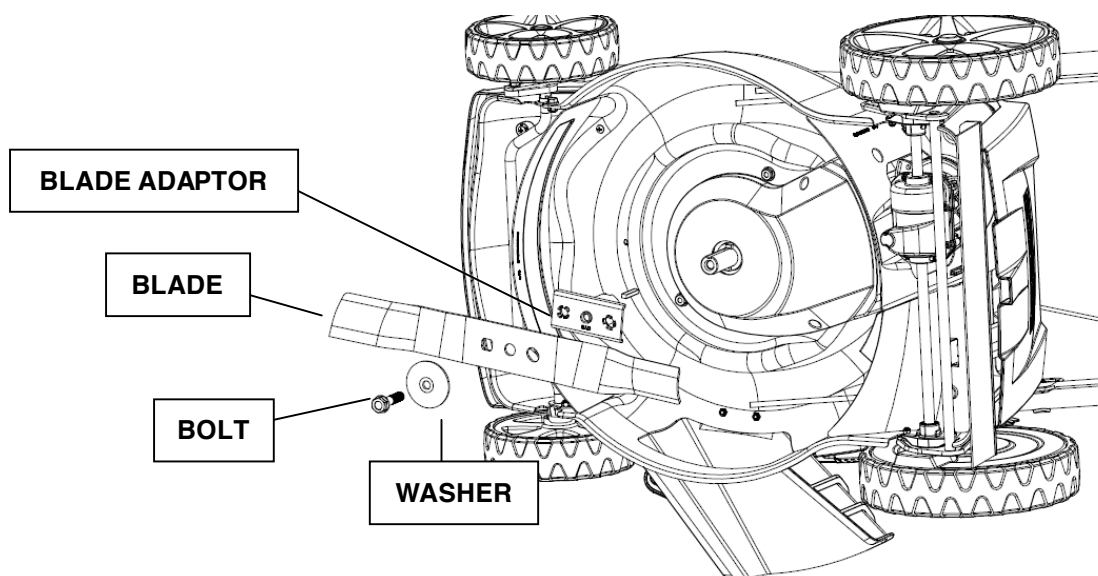
### **Inspection**

- Tilt the mower to the right, so the air cleaner side is up. This will help to prevent fuel leakage and hard starting.
- Inspect the blade for damage, cracks and excessive rust or corrosion. A dull blade can be sharpened, but a blade that is excessively worn, bent, cracked, or otherwise damaged must be replaced.
- A torque wrench must always be used when installing the blade bolt. Tighten to 45N.m.

### **Removal and installation**

If you remove the blade for sharpening or replacement, you will need a torque wrench for installation. Wear heavy gloves to protect your hands.

- Remove the spark plug cap.
- Remove the bolt with a 16mm socket spanner. Turn bolt anticlockwise to loosen. Use a wooden block to prevent the blade from turning when removing the bolt. Then remove the blade.
- Install the blade using the blade bolt and special washers. Be sure to install the special washers with the concave side toward the blade and the convex side toward the bolt.
- Tighten the blade bolt with a torque wrench (45N.m). Turn the bolt clockwise to tighten. Use a wooden block to prevent the blade from turning when tightening the bolt.



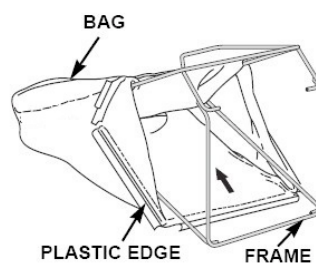
## Grass Bag Cleaning & Replacement

### Cleaning

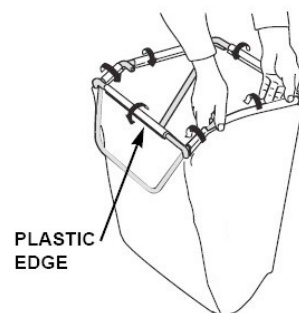
- Wash the bag with a garden hose, and allow it to dry completely before use; a wet bag will clog quickly.

### Replacement

- Unclip the plastic edges of the bag from the frame, remove the frame from the bag.



- Insert the frame into the bag, clip the plastic edges of the bag onto the frame.

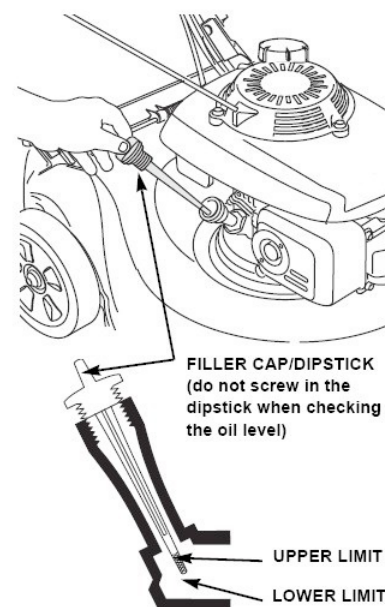


## Engine Maintenance

### Check Engine Oil Level

Check the engine oil level with the engine stopped and the mower.

- Remove the oil filler cap, and wipe the dipstick clean.
- Insert the dipstick into the oil filler neck, but do not screw it in.
- Check the oil level shown on the dipstick. If near the lower, fill to the upper level with the oil. Do not overfill.
- Screw in the filler cap securely.



**NOTICE:** Running the engine with a low oil level will cause engine damage.

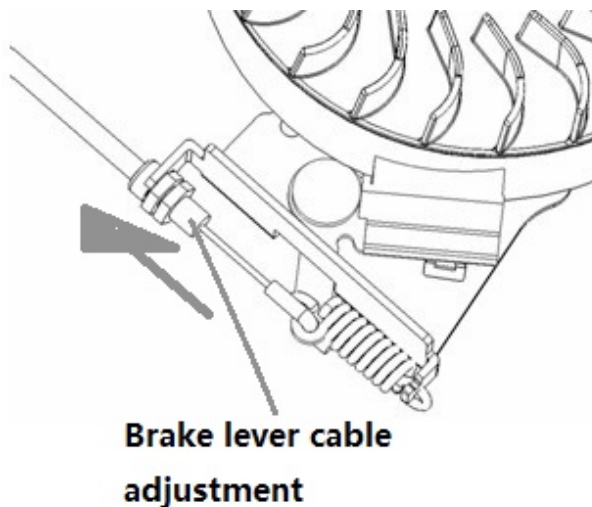
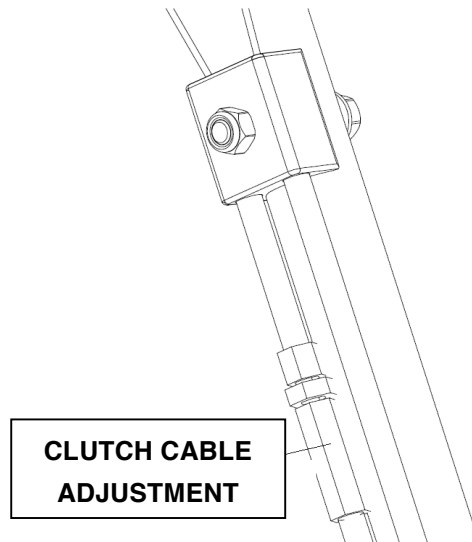
### Change Engine Oil

Drain the used oil while the engine is warm. Warm oil drains quickly and completely.

- Wipe the oil filler area clean, then remove the oil filler cap/dipstick.
- Place a suitable container next to the mower to catch the used oil, then tilt the mower on its right side. The used oil will drain through the filler neck. Allow the oil to drain completely.
- Do not dispose of it in general waste, pour it on the ground, or pour it down a drain.
- Fill with the recommended oil. Do not overfill. Allow a couple of minutes for the oil to settle in the engine, then measure the oil level.
- See the engine manual for more details.

### The Clutch Lever Cable and Brake lever Cable Adjustment

- If the clutch lever is loose, you should turn the clutch cable adjustment to tighten.



- If the brake lever does not sufficiently tension the cable to allow the engine to start then turn the brake cable adjustment to tighten.



## Maintenance Schedule

REGULAR SERVICE PERIOD		Before Each Use	First Month or 5 Hrs	Every 3 Months or 25 Hrs	Every 6 Months or 50 Hrs	Every Year or 100 Hrs	Every Two Years or 250 Hrs
ITEM Perform at every indicated month or operating hour interval, whichever comes first.							
Engine oil	Check	O					
	Replace		O			O	
Air cleaner	Check		O				
	Replace			O			
Spark plug	Check/Adjust					O	
	Replace					O	
Fuel tank and filter	Clean			O			
Fuel Pipe	Check					O	
Cutter Deck	Clean			O			
Belt Guard	Clean			O			
Belt	Check			O			

## Trouble Shooting

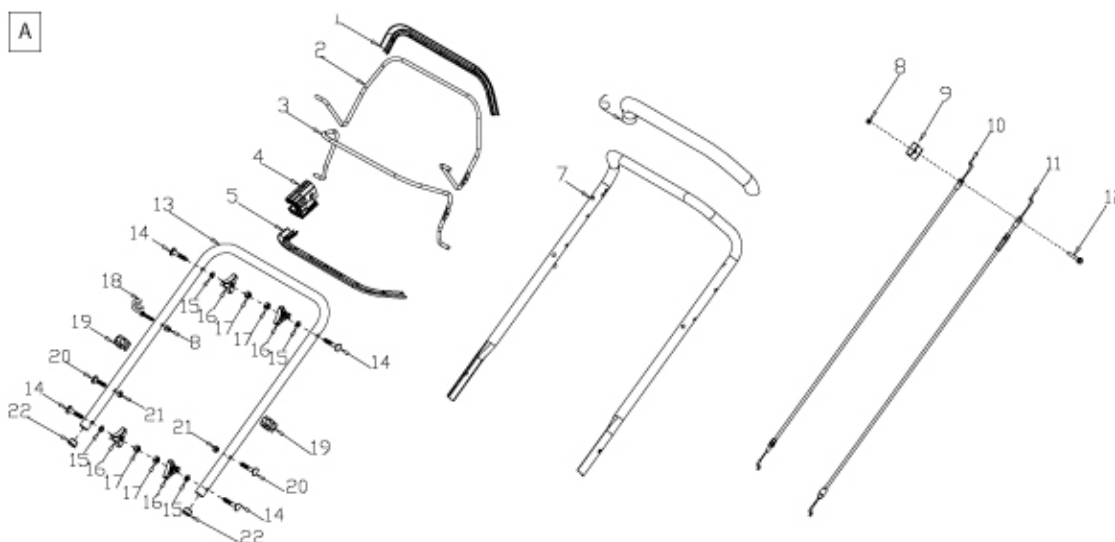
ENGINE WILL NOT START	Possible Cause	Correction
1. Check fuel tap.	Fuel tap off.	Turn tap on.
2. Check fuel.	Out of fuel.	Refuel.
	Bad fuel; engine stored without treating or draining petrol, or refueled with bad petrol	Drain the fuel tank and carburetor. Refuel with fresh petrol.
3. Remove and inspect spark plug.	Spark plug faulty, fouled, or improperly gapped.	Replace the spark plug.
	Spark plug wet with fuel (flooded engine).	Dry and reinstall spark plug.
4. Take machine to an authorised servicing dealer, or refer to shop manual.	Fuel filter clogged, carburetor malfunction, ignition malfunction, valves stuck, etc.	Replace or repair faulty components as necessary.

ENGINE LACKS POWER	Possible Cause	Correction
1. Check air cleaner	Air cleaner elements clogged.	Clean or replace air cleaner elements.
2. Check fuel	Bad fuel; engine stored without treating or draining petrol, or refueled with bad petrol.	Drain the fuel tank and carburetor. Refuel with fresh petrol.
3. Take engine to an authorized our servicing dealer, or refer to shop manual.	Fuel filter clogged, carburetor malfunction, ignition malfunction, valves stuck, etc.	Replace or repair faulty components as necessary.

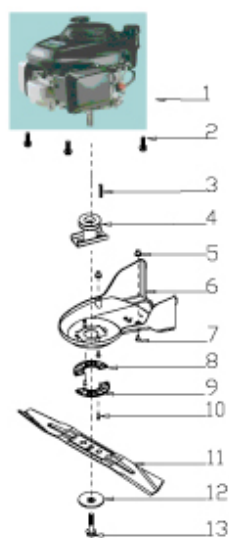
## 6. Storage

- Always store indoors.
- The same fuel must not remain in the tank for more than one month, unless using B3C Ethanol Shield fuel stabiliser or alkylate petrol.
- Thoroughly clean the mower and store it indoors in a dry place.
- Never store the lawnmower with fuel in the tank inside a building where can reach an open flame or spark.
- To reduce fire hazard, keep the engine, muffler, battery compartment and fuel storage area free of grass, leaves or excessive grease.
- If the fuel tank has to be drained, this should be done outdoors.
- Be careful during adjustment of the machine to prevent entrapment of the fingers between moving blade and fixed parts of the machine.
- Allow the product to cool for at least 30 minutes before storing.
- The mower must be stored flat and level.

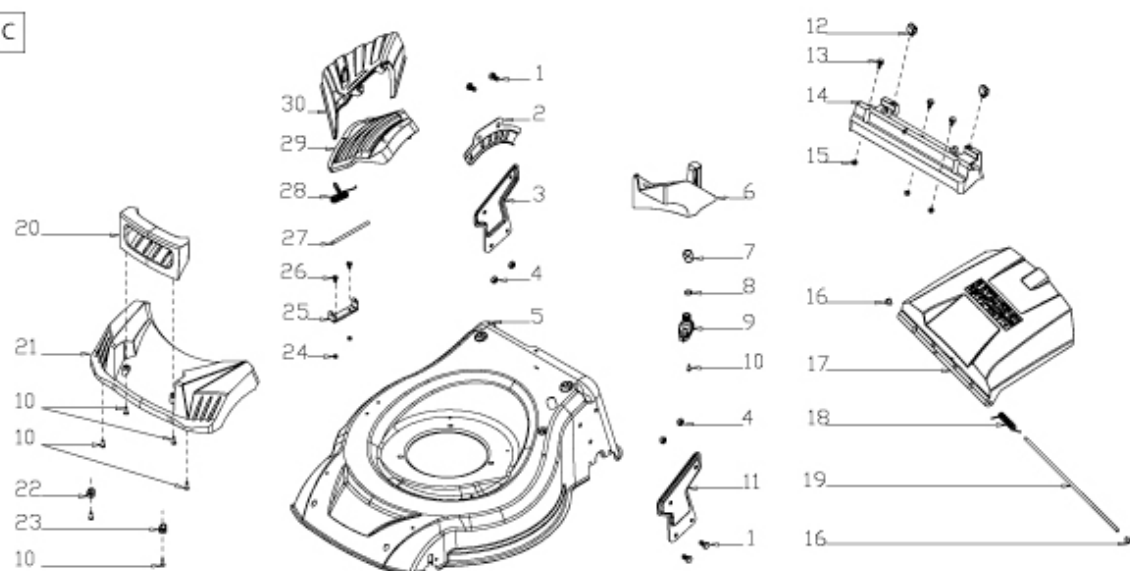
## 7. Parts



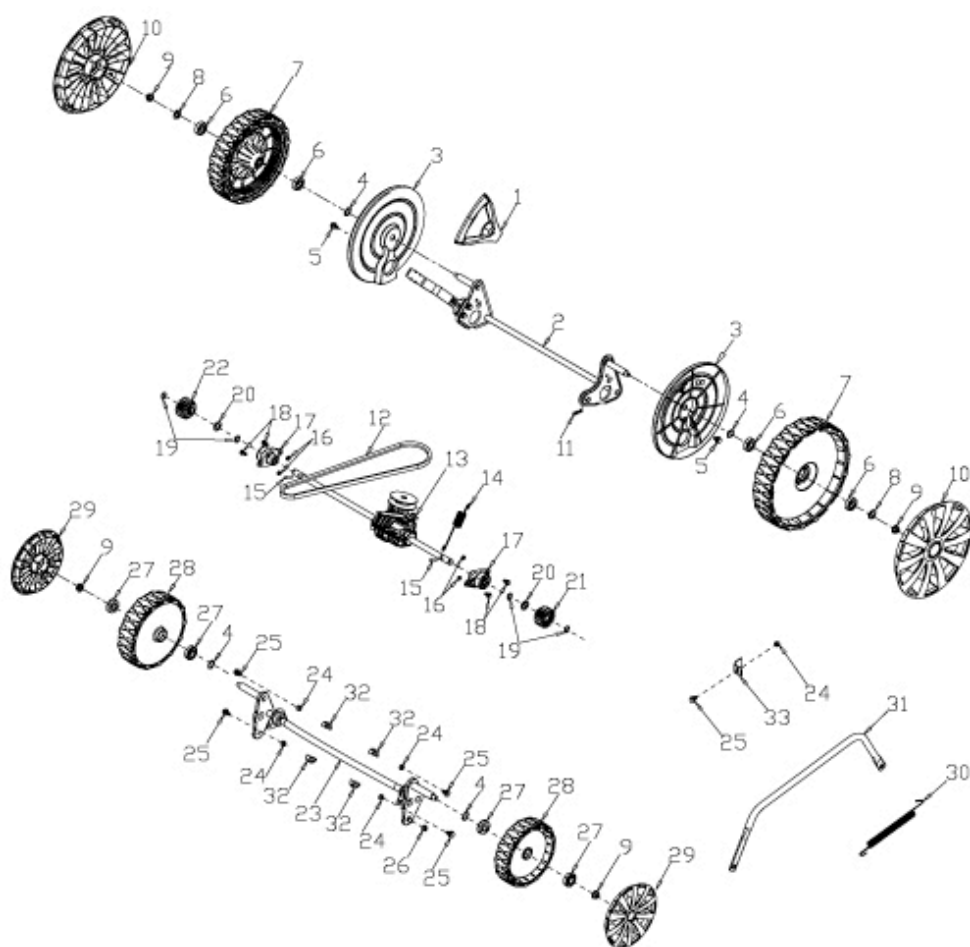
B



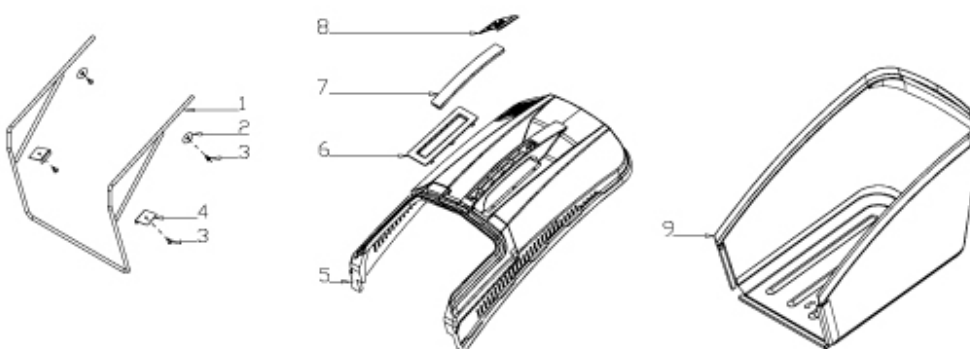
C



D



E



	Part No.	Description			
A-1	G33Q0000110	Plastic Decoration	A-11	G339XYA0000	Clutch Cable
A-2	G3375000056	Clutch Lever	A-12	B1066W06032	Nut
A-3	G3354000056	Brake Lever	A-13	G33B4000001	Lower Handle
A-4	G3XW0000000	Limiting Stopper	A-14	B1088W08050	Bolt
A-5	G33Q0000119	Plastic Decoration	A-15	B5019W00000	Flat Washer
A-6	G3320000000	Foam Pipe	A-16	G33C1100073	Knob
A-7	G333F000001	Upper Handle	A-17	B2020W00000	Nut
A-8	B2011B00000	Nut	A-18	G33K0000000	Rope Guide
A-9	G339X300000	Cable Fixing Clamp	A-19	G33H2000000	Cable Support
A-10	G639XX50000	Brake Cable	A-20	B1087W08032	Bolt
			A-21	B2009W00000	Nut

A-22	G33J0000000	Handle Plug
B-1	GCV16N3D000	Engine
B-2	B3001B00000	Screw
B-3	G34AWX00000	Blade adapter
B-4	BE005W00000	Flat Key
B-5	G22K0000000	Screw Cap
B-6	G623N000000	Belt Cover
B-7	B3022W00000	Screw
B-8	G323G000000	Belt Cover Plate
B-9	G323H000000	Belt Cover Plate
B-10	B3034W00000	Screw
B-11	G6510000000	21" Blade Orange
B-12	G3520000000	Blade Washer
B-13	B1001B00032	Blade Bolt
C-1	B1036W08015	Bolt
C-2	G54BD000000	Height Adjustment Plate
C-3	G42B0000000	Right Bracket
C-4	B2009W00000	Nut
C-5	G6217000057	Deck
C-6	G46M0000000	Mulching Plug
C-7	G52E0000000	Cable Sleeve
C-8	BD001B00000	Seal Ring
C-9	G62D0000000	Washing Linker
C-10	B3023W00000	Screw
C-11	G42C0000000	Left Bracket
C-12	G32J0000000	Rear Cover Support
C-13	B1059W06014	Bolt
C-14	G42A0000000	Rear Cover Pedestal
C-15	B2008W00000	Nut
C-16	G32K0000000	Plug
C-17	G46B0000010	Rear Cover Pedestal
C-18	G36J0000000	Rear Cover Spring
C-19	G36E0000000	Rear Cover Shaft
C-20	G4241100019	Front Plastic Face Handle
C-21	G4241000010	Front Plastic Face
C-22	G52G0000000	Washer R
C-23	G52F0000000	Washer L
C-24	B2007W00000	Nut
C-25	G4250000000	Side Discharge Bracket
C-26	B1052W05010	Bolt

C-27	G3260000000	Side Discharge Cover Shaft
C-28	G3271000000	Side Discharge Cover Spring
C-29	G4280000000	Side Discharge Cover
C-30	G4290000000	Side-Discharge Guiding Board
D-1	G4420000019	Height Adjustment Handle
D-2	G5490000300	Rear Wheel Shaft Assy
D-3	G54AD000000	Inner Wheel Cover
D-4	B6009B00000	Spring Washer
D-5	B1057W06010	Bolt M6*10
D-6	B0014W00000	Ball Bearing
D-7	G54N1000000	11" Wheel
D-8	B5031W00000	Flat Washer
D-9	B2017W00000	Nut
D-10	G54X2000073	11" Outer Wheel Cover
D-11	BB004W00000	Split Pin
D-12	BA001B00000	Belt Li737
D-13	G34APY00000	Gearbox
D-14	G34AJ000200	Spring
D-15	G34AN000000	Pin
D-16	B2007W00000	Nut
D-17	G34DV000000	Shaft Sleeve
D-18	B1053W05012	Bolt
D-19	B9006B00000	Lock Ring
D-20	B5033W00000	Flat Washer
D-21	G54AL000000	Left Gear
D-22	G54AM000000	Right Gear
D-23	G6451Y00000	Front Wheel Shaft
D-24	B2008W00000	Nut
D-25	B1058W06012	Bolt
D-26	B2016W00000	Nut
D-27	B0019W00000	Bearing
D-28	G34H3000000	8" Wheel
D-29	G34T2000073	8" Outer Wheel Cover
D-30	G34AX100000	Height Adjustment Spring
D-31	G6410000101	Height Adjustment Connecting Rod
D-32	G349X000000	Precursor axle

D-33	G34APX20000	Limiting plate	E-5	G4661110010	Plastic Cover
E-1	G4661200000	Metal Bracket	E-6	G3661120010	Cover Plate
E-2	B5032W00000	Washer	E-7	G4661130019	Hand Cover
E-3	B3022W00000	Screw	E-8	G4661120019	Indicated Board
E-4	G4661300000	fixed plate	E-9	G1788000000	Fabric Bag

## 8. Warranty

1. Users Statement of Warranty Each new machine is warranted against defective material or assembly of material under normal usage. The warranty applies to the original purchaser, is not transferable and covers faulty parts and the labour involved in replacing and repairing those parts, which are of original manufacture.

2. Period of Warranty 2 year conditional warranty from the original date of sale to the first domestic user. 90 days from the original date of sale to the professional/commercial or for hire user. Engine warranty as per the engine manufacturer's warranty, which will be supplied with the machine. 90 days from the original date of sale for Replacement Spare Parts All machines' must be serviced within the first 14 months from the original date of purchase, to qualify for a second year parts & labour warranty. Evidence may be required for warranty claims after this period. A reduced warranty period of 90 days applies to those items which are subject to normal wear and tear and in normal use, will need replacement or adjustment. These items are chargeable after 90 days of ownership; filters, wheels, belts, brake & clutch friction components, control cable & starter cords, fluids & lubricants, spark plugs, blades , drive & clutch cable surfaces, carburettor cleaning, bearings& grass collectors.

3. Not covered by this warranty (a) The warranty policy does not cover any depreciation or damages caused by ordinary wear, rusting or corrosion, lack of correct maintenance or operation, misuse, abuse, lack of transportation or accident. (b) The warranty policy does not cover any costs necessary for the standard periodic maintenance services instructed by the operators manual, or service parts replacement which would include oil, filters, tyres, belts, brake linings, fuses, blades, seals and other service parts unless it can be proven that the item has evidence of faulty manufacture. (c) The warranty policy will not cover failure or damage caused as a result of parts or accessories being modified without the written approval of Sherpa Tools Ltd. (d) The warranty policy will not cover the unit if non-genuine parts have been fitted and as a result damage has occurred to the unit. (e) The warranty policy is non-transferable and is only applicable to the original purchaser.

4. Disclaimer (a) This warranty is only a remedy for defect of products. Sherpa Tools will never warranty in terms of the merchantability or the fitness for a particular purpose. (b) No person is authorised to make any warranties, representations or promises, expressed or implied, on behalf of Sherpa Tools, or to modify the terms conditions or limitation of this warranty policy in any way. (c) Neither Sherpa Tools nor any company affiliated with

Sherpa Tools shall be liable in any event or manner whatsoever for incidental or consequential damages or injuries, including, but not limited to, loss of crops, loss of profit, out of pocket expenses or profits, rental of substitute equipment or other commercial losses.

5. General (a) Most warrantable failures show up within the first few weeks of use. These failures are usually straightforward and warranty assessment is relatively easy. (b) Failures relating to cutter decks and belts need careful investigation, as the cause may not always be straightforward. Look for damage to blades and pulleys especially when the cutter belt or blade boss have snapped or cracked as this could be due to impact damage. (c) Customers should always refer to the operator/instruction manual when any disputed problem arises, you will find most areas covered within the manual.

## **9. EC Declaration Of Conformity**

We, Importer  
**Mower Magic**  
**LN6 9AL**

Declare that the product  
**Model: G53-SHL-Q (ST53H)**

Complies with the following directives:  
**EN ISO 5395-1:2013**  
**EN ISO 2395-2:2013**  
**AfPS GS 2014:01**

The conformity assessment procedure followed was in accordance with  
**EC Council Directive 2006/42/EC**  
**Machinery**

Name of the Notified Body: **TUV Rheinland LGA Products GmbH**  
Address: Tillystabe 2 – 90431 Nurnberg

### **Authorised signatory and technical file holder**

Date: 1/11/2017

Signature:



Name / Title: Mr. Jonathan Hall / Director

Magic House, Station Road, North Hykeham, Lincoln, LN6 9AL.

Sherpa Tools Ltd.  
ST53H PETROL LAWNMOWER

If you experience any problems with this product,  
please do not return to the store. Contact Sherpa  
Tools direct on our UK helpline.

UK Helpline: 01522 283 020  
[www.sherpatools.co.uk](http://www.sherpatools.co.uk)

2018