



OPERATOR'S MANUAL AND PARTS LIST

PETROL LAWNMOWER - QGPM20ES

Spares & Support: 01793 333212

Before use please read & understand this manual, paying particular attention to the safety instructions.

CONTENTS

SAFETY INSTRUCTIONS	3
MAJOR PARTS	4
ASSEMBLY AND OPERATION	5-6
MAINTENANCE	7
PARTS DIAGRAM AND LIST	8-9
SPECIFICATIONS	10
EC DECLARATION OF CONFORMITY	11

SAFETY INSTRUCTIONS

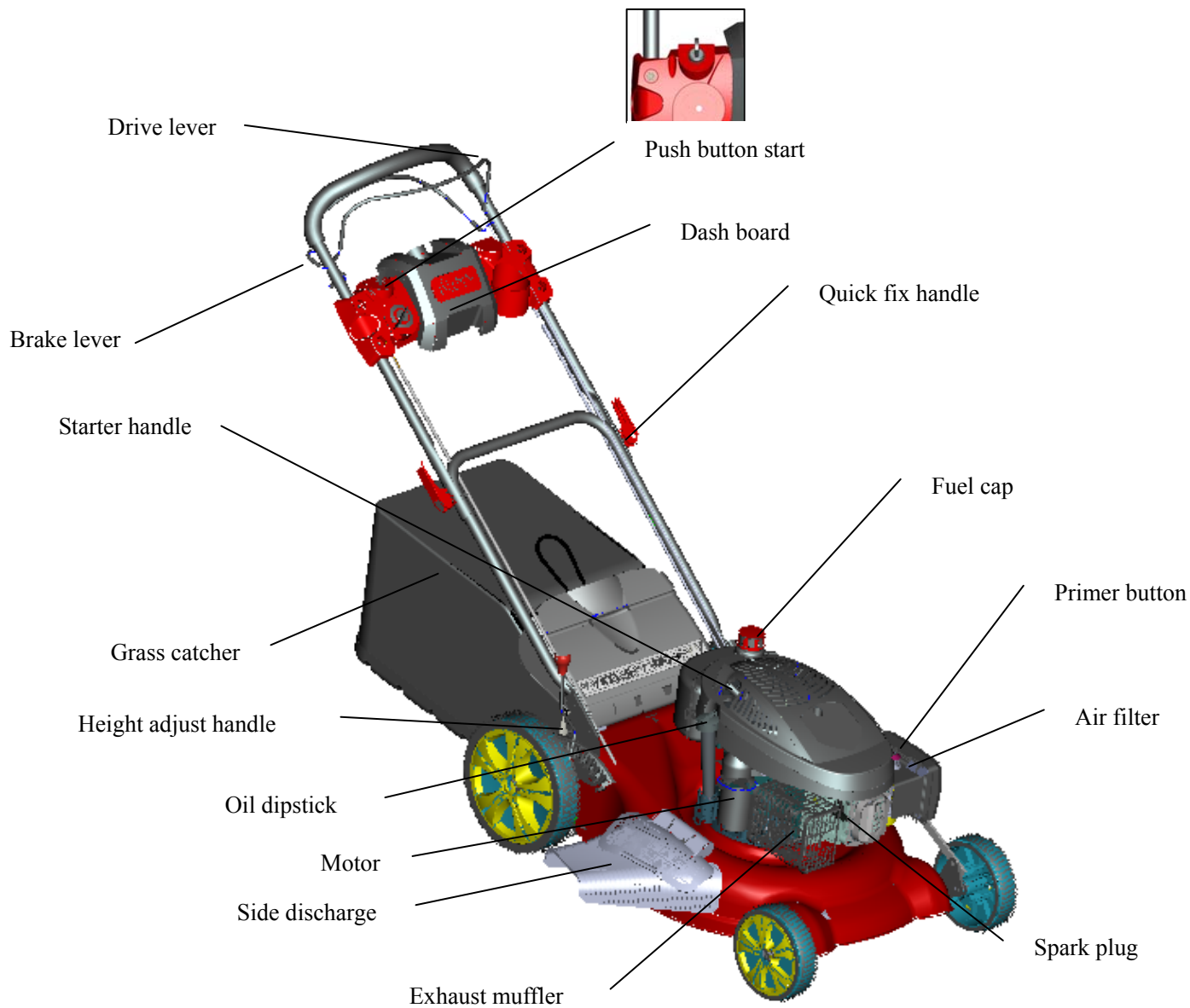
Read and understand the owner's manual and labels affixed to the lawn mower. Learn its application and limitations as well as the specific potential hazards. Retain these instructions for reference.



- Use sturdy footwear - do not operate when barefoot or wearing open sandals.
- Do not put hands or feet near or under rotating parts. Keep clear of the discharge opening at all times.
- Do NOT operate the lawn mower if you are tired, ill or under the influence of alcohol or drugs.
- Do NOT smoke when using the lawn mower and ensure caution when handling fuel. We recommend you fuel the machine away from where you wish to work to prevent any spilt fuel igniting when you start the engine.
- Ensure that bystanders, children and pets keep well away when mowing and only allow persons familiar with these instructions to use the lawn mower.
- Inspect the lawn mower, and in particular the blade, before use for any worn or damaged parts. Do not use until the parts are repaired or replaced with parts approved by the manufacturer.
- Before starting the engine make sure the lawn is clear of obstacles such as stones, branches or children's toys.
- Always stop the engine when crossing gravel drives, walks or roads. Stop the engine and allow the blade to stop rotating before removing the grass bag for emptying.
- Stop the engine and disconnect the spark plug before clearing blockages, cleaning or inspecting the mower.
- Do not operate when raining and take particular care on damp grass which can prove slippery, particularly on slopes.
- When mowing on a slope always mow across the slope, not up and down. Take care when changing direction. The slope should not exceed 20 degrees.
- Clean the mower after each use and, if storing for a prolonged period, drain down the fuel in the tank. Remove the spark plug and put a few drops of oil into the cylinder before pulling the starter a couple of times to distribute the oil evenly. Replace the spark plug. If you need to tilt the mower while cleaning always tip it backwards, towards the handles, do not tip it on its side as this will cause oil to enter the carburettor or exhaust.



MAJOR PARTS

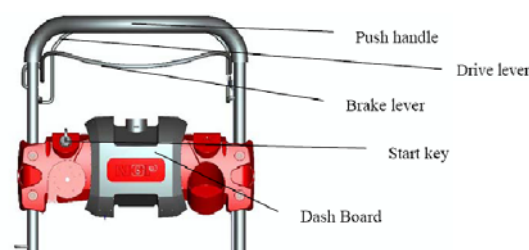


ASSEMBLY

The lawn mower is shipped without oil or petrol in the engine.

The mower has been assembled and tested in the factory and only needs a small amount of assembly.

- Remove the mower carefully from the box - it may be easier to remove one side of the box and roll the machine out.
- Depress the Operator Presence Control Bar Unfold handles carefully so as not to pinch the cables then raise the lower handles. Fit the two bolts and wingnuts from the parts bag, which will lock the lower handle into place. Raise with the upper handle section so that it lines up with the lower lower handle section. Tighten the wingnuts.
- Fit the dashboard using the four bolts and nuts as shown in the Fig.1 on page 6.
- The diagram shows the position of the three parts of the upper handle.
- The brake lever (sometimes called the operator presence control lever) must be pulled back towards the handle to start the engine and during operation. If the lever is released it will automatically stop the engine.
- The drive control lever - pull this lever up towards the handle to engage the self-propelled mode. If this is not engaged the mower can be used in 'push' mode.
- The engine speed has been set at the factory for optimum performance - it is not adjustable.
- **Before your initial use of the mower and at the beginning of every season, charge the battery for 5-6 hours.**
- The cutting height can be adjusted by a single lever through 5 positions from 25-75mm. The medium position is best for most lawns. Under certain conditions, such as very tall grass, it may be necessary to cut the grass twice, once on the highest setting and then again on medium.
- Fill the engine with SAE30 oil to the 'full' mark on the dipstick. Check the level of the oil, it should be 500 to 600ml.
- To connect the lower handle to the deck, insert a Bolt M8x30/8.8 (QG105-19) into the lower hole from the outside of the handle and secure with a Flat Washer (QG105-13), Knob (QG105-18) and a Hex Nut M8x30/8.8 (QG105-15). Insert a Carriage Bolt M8x25/8.8 (QG105-96) into the upper hole from the inside of the handle and secure with a Flat Washer (QG105-95), a Knob (QG105-10) and a Hex Nut M8/8.8 (QG105-15) as in Fig. 2 on page 6. If these steps are not followed, your collection box may not fit correctly.



ASSEMBLY DIAGRAMS

Fig. 1

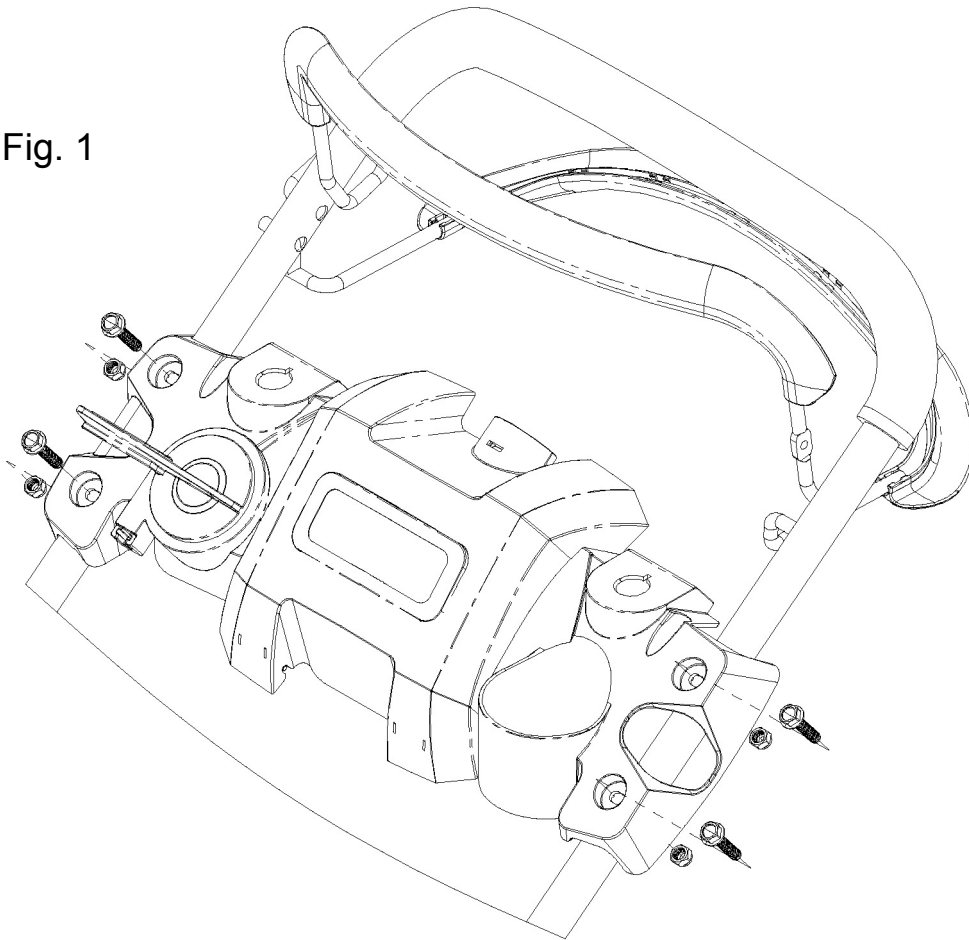
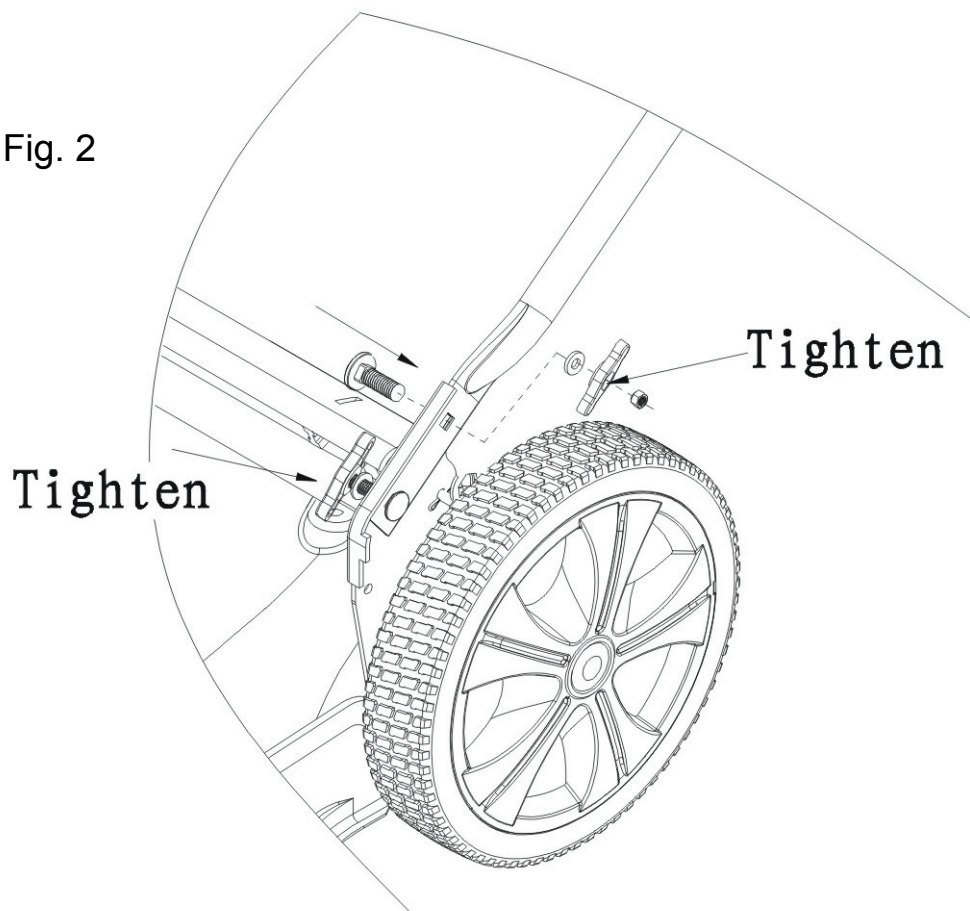


Fig. 2



OPERATION

The mower has four different operating modes.

1. Collecting:

- Ensure that the side cover is closed.
- Fit the grassbox by lifting the rear flap on the mower and hook the front of the box to the shaft on the mower.
- Lower the flap to lock the grassbox in position.
- When the box is full, the grass will be visible through the viewing window in the top of the box.
- Stop the engine before emptying the grassbox.

2. Rear Discharge:

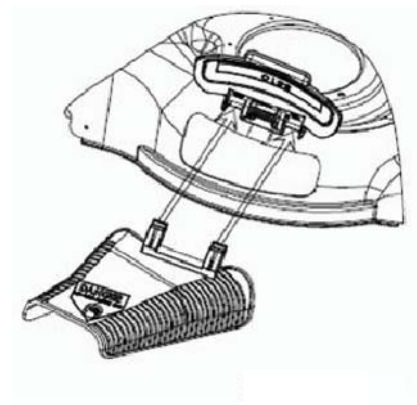
- Ensure that the side cover is closed.
- With the grassbox removed and the rear flap in the down position, the mower will cut and discharge the grass from the rear of the machine.

3. Side Discharge:

- Fit the mulch plug to the rear discharge opening of the mower and close the rear flap.
- Lift the cover on the side of the mower and attach the side discharge chute as shown in the diagram.
- The mower will now eject grass from the side discharge chute.

4. Mulching:

- Fit the mulch plug to the rear discharge opening of the mower and close the rear flap.
- Ensure that the side cover is in the closed position (with the discharge chute removed).
- The mower will now recycle the chopped grass into the lawn surface.
- To mulch efficiently only cut one third of the length of the grass.



Operation:

- Fill the engine with SAE30 oil to the 'full' mark on the dipstick. Check the level of the oil, it should be 500 to 600ml.
- Fill the fuel tank with unleaded petrol.
- For a cold start press the primer bulb 3-5 times to allow fuel into the engine.
- Pull the brake lever back to the push handle and press the start button until the engine starts and runs.
- The machine can also be started using the pull cord (if the battery is flat). Pull the brake lever back to the push handle and pull starter cord until resistance is felt, then pull rapidly to start the engine.

Note: if the brake lever is released the engine will stop.

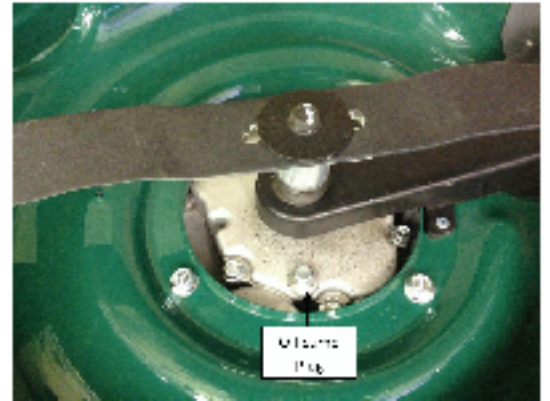
- Pull the drive control lever up towards the handle and the lawnmower will self-propel.



MAINTENANCE

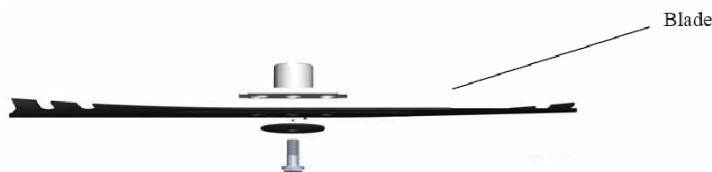
Regular careful maintenance is essential for keeping the lawnmower in good condition.

- Before each use, ensure that all bolts, nuts and screws are tight.
- After each use, allow the mower to cool down before cleaning off any grass and other debris. Use a brush or compressed air and avoid getting water into the engine.
- Never store the mower with petrol in the tank within an enclosed area where it is possible for fumes to reach an open flame or spark.
- When storing for a long period drain the mower of fuel after the engine has cooled down. Do this outside to reduce any risk of fire from spilt fuel.
- Change the oil after the first 5 hours of use and after every season or every 50 hours of use. The Sump Plug is located on the underneath of the machine deck. Dispose of waste oil at your local recycling centre.
- Clean the spark plug regularly and change every season.



To change the blades:

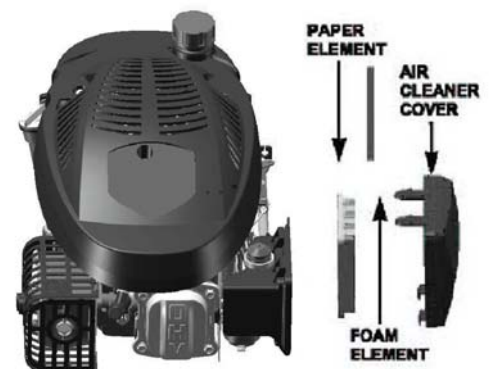
- Drain the fuel tank by running the mower until the fuel tank is empty and the engine stops.
- Allow the engine to cool and then tip on to its left hand side (air cleaner side uppermost).
- Using gloves to protect your hands, undo the screw and remove the old blade and replace with a new one in the order shown on the diagram below.
- Tighten the screw.



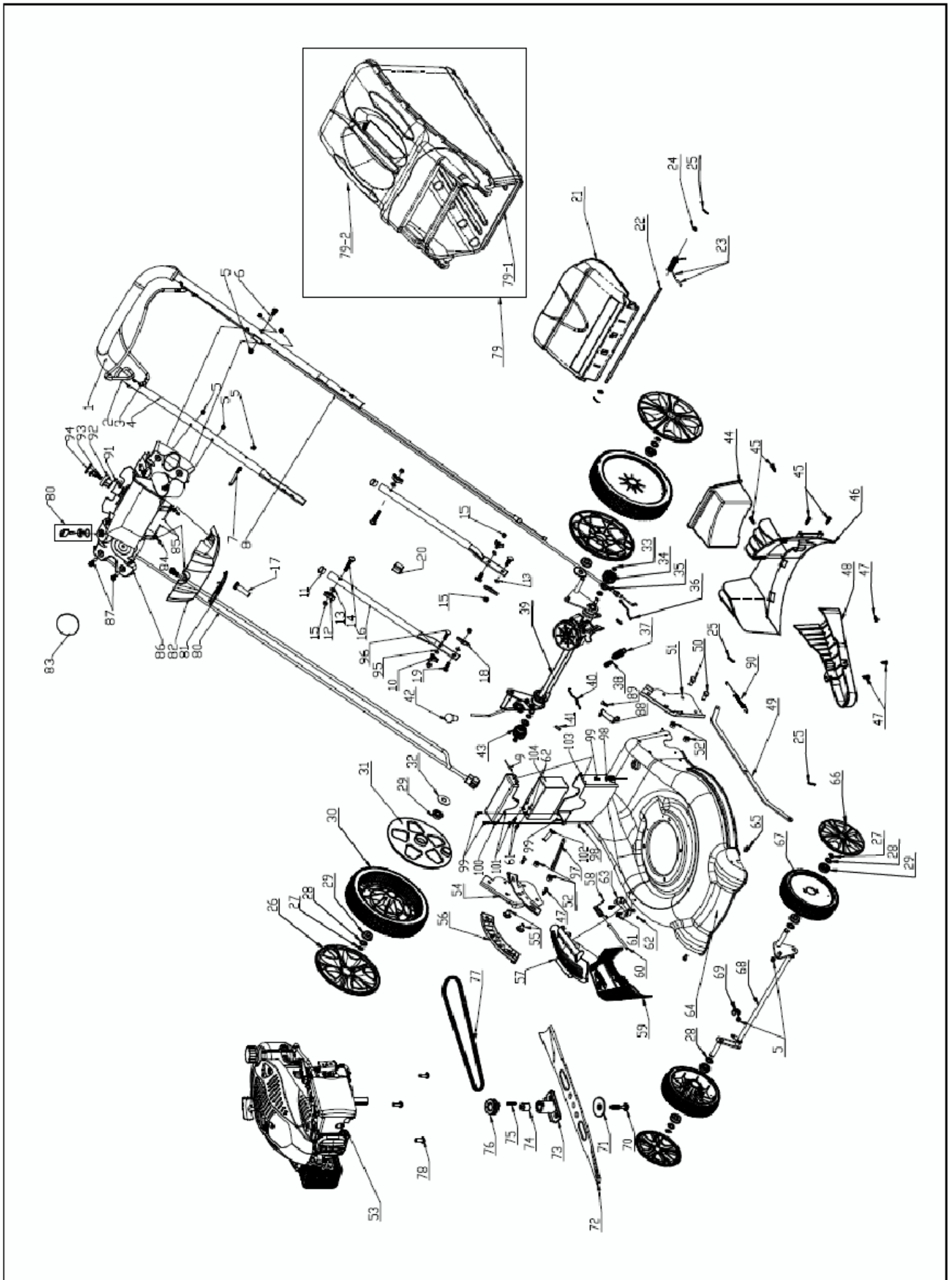
A damaged blade that is out of balance will cause the mower to vibrate and may break. Check the condition of the blade regularly.

To change the air filter:

- Unclip the filter cover and remove the sponge and paper elements.
- The sponge can be washed in soapy water, dried and refitted.
- If the paper element is heavily contaminated it should be replaced using a genuine part from your local dealer.



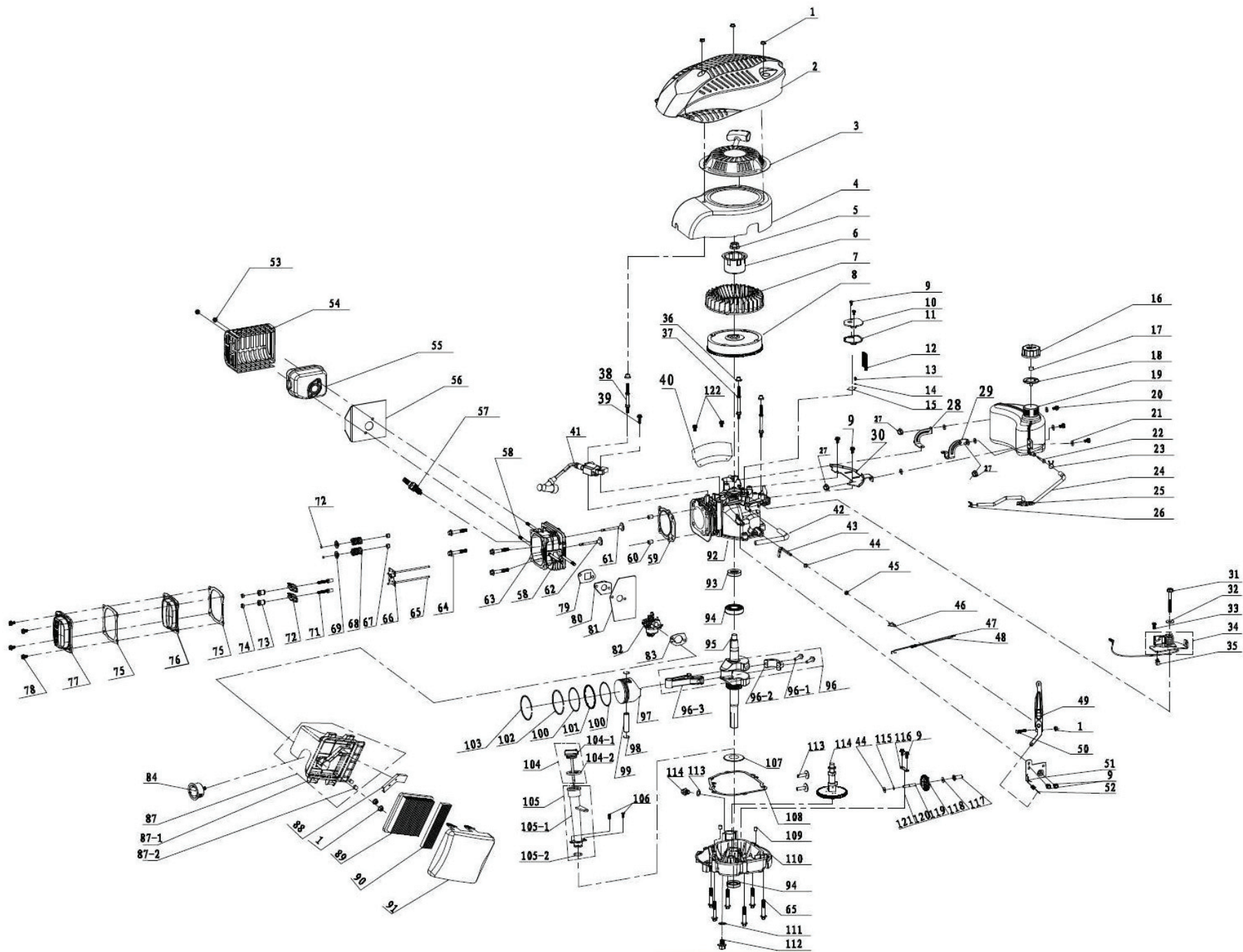
PARTS DIAGRAM



PARTS LIST

No.	Part No.	Description	QTY	No	Part No.	Description	QTY	No	Part No.	Description	QTY
1	QG105-01	Foam Pipe	1	36	QG105-36	Left Steel Wire Spring	1	71	QG105-71	Blade Washer	1
2	QG105-02	Brake Lever	1	37	QG105-37	Self-propel Cable Spring	1	72	QG105-72	510 Blade B	1
3	QG105-03	Drive Lever	1	38	QG105-38	Self-propelled Spring	1	73	QG105-73	Short Bush Blade Adapter	1
4	QG105-04	Upper Handle for Dash Board	1	39	QG105-39	S/P Rear Drive Shaft Assy	1	74	QG105-74	Short Bush for Blade Adapter	1
5	QG105-05	Hex Locknut M6/8.8	8	40	QG105-40	Right Steel Wire Spring	1	75	QG105-75	Long Key for Crankshaft	1
6	QG105-06	Hex Flange Bolt M6x35/8.8	1	41	QG105-41	Pin	2	76	QG105-76	Small Belt Wheel	1
7	QG105-07	Rope Guide	1	42	QG105-42	Height Adj Handle Ball	1	77	QG105-77	V Type Belt	1
8	QG105-08	Brake & Self-propelled Cable	1	43	QG105-43	Small Ratchet Gear Right	1	78	QG105-78	Hex Bolt M10x25/8.8	3
9	QG105-09	Shaft for Battery Box	1	44	QG105-44	Mulching Plug	1	79	QG105-79	Grassbox Assembly	1
10	QG105-10	Knob	2	45	QG105-45	Cross Head Tapping Screw	4	79-1	QG105-79-1	60L Grassbox Bag	1
11	QG105-11	Plug for Handle	2	46	QG105-46	Rear Baffle	1	79-2	QG105-79-2	Grassbox Cover	1
12	QG105-12	Knob	2	47	QG105-47	Cross Head Tapping Screw	5	80	QG105-80	Starter	1
13	QG105-13	Flat Washer/ Φ8.4xΦ16x1.6	4	48	QG105-48	Belt Cover	1	81	QG105-81	Dash Board	1
14	QG105-14	Carriage Bolt M8x50/8.8	2	49	QG105-49	Height Adj Pull Rod	1	82	QG105-82	Upper Cover for Dash Board	1
15	QG105-15	Hex Nut M8/8.8	6	50	QG105-50	Hex Bolt M8×16/8.8	2	83	QG105-83	Circle Cover for Dash Board	1
16	QG105-16	B Type Lower Handle	2	51	QG105-51	Left Side Board	1	84	QG105-84	Spring for Cover	2
17	QG105-17	Fastener	1	52	QG105-52	Hex Locknut M8/8.8	4	85	QG105-85	Shaft for Cover	2
18	QG105-18	Thin Knob	2	53	QG105-53	T675 Engine	1	86	QG105-86	Dash Board Pedestal	1
19	QG105-19	Bolt M8X30/8.8	2	54	QG105-54	Right Side Board	1	87	QG105-87	Hex Bolt M6X28/8.8	4
20	QG105-20	Fastener	1	55	QG105-55	Carriage bolt M8X15/8.8	2	88	QG105-88	Board for Rear Dis-charge	1
21	QG105-21	Rear Discharge Cover	1	56	QG105-56	Board for Height Adjuster	1	89	QG105-89	Cross Head Tapping Screw	1
22	QG105-22	Rear Discharge Cover Shaft	1	57	QG105-57	Mulching Board	1	90	QG105-90	Spring for Pull Rod	1
23	QG105-23	Rear Discharge Cover Spring	1	58	QG105-58	Mulch Spring	1	91	QG105-91	Cross Head Tapping Screw	1
24	QG105-24	Lock Washer	2	59	QG105-59	Side Discharge Cover	1	92	QG105-92	Starter Button Housing	1
25	QG105-25	Pin	4	60	QG105-60	Mulch Shaft	1	93	QG105-93	Spring for Button	1
26	QG105-26	10" Outer Wheel Trim	2	61	QG105-61	Hex Bolt M5X10/8.8	4	94	QG105-94	Button	1
27	QG105-27	Flexible Washer	6	62	QG105-62	Hex Locknut M5/8.8	4	95	QG105-95	Flat Washer	2
28	QG105-28	Washer /Φ13xΦ20x1.5	6	63	QG105-63	Bracket Press Board	1	96	QG105-96	Carriage Bolt M8x25/8.8	2
29	QG105-29	Punching Bearing	8	64	QG105-64	Deck	1	98	QG105-98	Flat Washer	2
30	QG105-30	10" Wheel Assy	2	65	QG105-65	Hex Bolt M6X12/8.8	2	99	QG105-99	Cross Head Tapping Screw	4
31	QG105-31	10" Inner Wheel Trim	2	66	QG105-66	7" Outer Wheel Trim	2	100	QG105-100	Battery Cover	1
32	QG105-32	Washer Φ39.3xΦ13.1x1	2	67	QG105-67	7" Wheel Assy	2	101	QG105-101	Hex Locknut M4/8.8	4
33	QG105-33	Flexible Washer	2	68	QG105-68	Front Drive Shaft Assy	1	102	QG105-102	Fastener	1
34	QG105-34	Small Ratchet Gear Left	1	69	QG105-69	Front Bracket Fastener	1	103	QG105-103	Battery Housing	1
35	QG105-35	Ratchet Gear Washer	2	70	QG105-70	Hex Flange Face Bolt A	1	104	QG105-104	Battery	1

PARTS DIAGRAM - ENGINE



PARTS LIST - ENGINE

No.	Part No.	Description	QTY	No	Part No.	Description	QTY	No	Part No.	Description	QTY
1	QG184-1	Nut M6	6	42	QG184-42	Waste Air Pipe	1	82	QG184-82	Carburettor Assy	1
2	QG184-2	Engine Cover	1	43	QG184-43	Speed Regulator Spindle	1	83	QG184-83	Steel Gasket	1
3	QG184-3	Recoil Start Assy	1	44	QG184-44	Flat Washer	1	84	QG184-84	Prime Button	1
4	QG184-4	Blower Housing	1	45	QG184-45	Oil Seal 6x11x4	1	87	QG184-87	Air Filter Pedestal	1
5	QG184-5	Nut M14 X1.5	1	46	QG184-46	Springness Split Pin	1	87-1	QG184-87-1	Air Filter Bush	2
6	QG184-6	Start-up Hub	1	47	QG184-47	Handspike of Valve	1	87-2	QG184-87-2	Washer	1
7	QG184-7	Fan	1	48	QG184-48	Pull Spring of Valve	1	88	QG184-88	Exhaust Gas Cover Board	1
8	QG184-8	Flywheel Assy	1	49	QG184-49	Speed Regulator Rocker	1	89	QG184-89	Paper Filter Element	1
9	QG184-9	BoltM6X12	8	50	QG184-50	T Type Bolt M6×23	1	90	QG184-90	Foam Filter Element	1
10	QG184-10	respirator cover plate	1	51	QG184-51	Speed Regulator Board	1	91	QG184-91	Air Filter Upper Cover	1
11	QG184-11	Gasket of Respirator Cover	1	52	QG184-52	Speed Regulator Pull Spring	1	92	QG184-92	Crankcase Assy	1
12	QG184-12	Lubricate Filtering Net	1	53	QG184-53	Nut M6	2	93	QG184-93	Oil Seal	2
13	QG184-13	Bolt M3 X 6	1	54	QG184-54	Muffler Cover Assy	1	94	QG184-94	Ball Bearing 6205	1
14	QG184-14	Spring gasket 3	1	55	QG184-55	Muffler Assy	1	95	QG184-95	Crankshaft Assy	1
15	QG184-15	Valve Cover	1	56	QG184-56	Exhaust Gasket	1	96	QG184-96	Connecting Rod Assy	1
16	QG184-16	Fuel Tank Cap	1	57	QG184-57	Spark Plug	1	97	QG184-97	Piston	1
17	QG184-17	Fuel Tank Cap Sponge	1	58	QG184-58	Two Stud Bolt M6x94	4	98	QG184-98	wrist pin ring	2
18	QG184-18	Fuel Tank Cap Gasket	1	59	QG184-59	Cylinder Head Gasket	1	99	QG184-99	Piston Pin	1
19	QG184-19	Fuel Tank	1	60	QG184-60	Cylinder Head Locating Pin	2	100	QG184-100	Doctor-bar ring	2
20	QG184-20	Bolt M6x22	3	61	QG184-61	Intake Valve	1	101	QG184-101	Bushing Ring	1
21	QG184-21	Cushion Blocking	6	62	QG184-62	Exhaust Valve	1	102	QG184-102	Piston Ring II	1
22	QG184-22	Filtering Net Duct of Fuel	1	63	QG184-63	Cylinder Head Assy	1	103	QG184-103	Piston Ring I	1
23	QG184-23	Oil Pipe Circlip I	1	64	QG184-64	Bolt M8x50	10	104	QG184-104	Rubber Seal Gasket	1
24	QG184-24	Oil Pipe	1	65	QG184-65	Handspike	2	105	QG184-105	"O" Ring 20x2.6	1
25	QG184-25	Twisting Clip	1	66	QG184-66	Guide Board of Handspike	1	106	QG184-106	Screw M4X12	2
26	QG184-26	Oil Pipe Circlip II	1	67	QG184-67	Oil Seal Assembled of Valve	2	107	QG184-107	Gear Gasket	1
27	QG184-27	Locknut M6	3	68	QG184-68	Spring of Valve	2	108	QG184-108	Seal Gasket of Crankcase	1
28	QG184-28	Right Bracket of Fuel Tank	1	69	QG184-69	Spring Coil of Exhaust Valve	2	109	QG184-109	Dowel Pin	2
29	QG184-29	Left Bracket of Fuel Tank	1	70	QG184-70	valve hood	2	110	QG184-110	Crankcase Cover	1
30	QG184-30	Main Bracket of Fuel Tank	1	71	QG184-71	Rocker Support Bolt of Valve	2	111	QG184-111	Flat Washer	2
31	QG184-31	Bolt	1	72	QG184-72	Rocker of Valve	2	112	QG184-112	Bolt	2
32	QG184-32	Flat Washer	1	73	QG184-73	Adjust Nut of Valve	2	113	QG184-113	Pin	2
33	QG184-33	Bolt	1	74	QG184-74	Combined Nut	2	114	QG184-114	Camshaft Assy	1
34	QG184-34	Detent Assy	1	75	QG184-75	Cylinder Head Cover Gasket	2	115	QG184-115	Circlip of Gear Shaft	1
35	QG184-35	Detent Bush	2	76	QG184-76	Cylinder Head Cover I	1	116	QG184-116	Gear Shaft Hold-down Plate	1
36	QG184-36	Blower Housing Bush	3	77	QG184-77	Cylinder Head Cover II	1	117	QG184-117	Sliding Sleeve	1
37	QG184-37	Abnormity Two Stud Bolt II	2	78	QG184-78	Bolt M6x14	4	118	QG184-118	Flat Washer	1
38	QG184-38	Abnormity Two Stud Bolt I	1	79	QG184-79	Air Inlet Pipe Paper Gasket I	1	119	QG184-119	Gear Shaft Assy	1
39	QG184-39	Bolt M6X25	1	80	QG184-80	Air Inlet Pipe	1	120	QG184-120	Gear Shaft of speed limit	1
40	QG184-40	Baffle	1	81	QG184-81	Air Inlet Pipe Paper Gasket II	1	121	QG184-121	Columnar Pin 2x8	1
41	QG184-41	Ignition Assy	1					122	QG184-122	Bolt M6x16	2

SPECIFICATION

Model	QGPM20ES
Engine	T675 - 200cc OHV
Engine Speed	2950rpm
Cutting Width	501mm
Cutting Height	25-75mm
Grassbag Capacity	60 litre
Deck	Steel High Wheel
Sound Pressure Level	82.4 dB(A) (K=3)
Guaranteed Sound Power Level	96 dB(A)
Vibration	5.86m/s ² (K=1.5)
Spark Plug	NGK BPR6ES or Champion RN9YCC
Fuel Tank Capacity	1.5 Litre

EC DECLARATION OF CONFORMITY

Declaration of Conformity

Pursuant to the regulations of the following EC Directives:

- Electromagnetic Compatibility Directive 2004/108/EC
- Machinery Directive 2006/42/EC
- Noise Emissions Directive 2000/14/EC

Handy Distribution Ltd hereby declares that the product:

Machine Type: **Petrol Lawn Mower**

Machine Model: **QGPM20ES**

Engine Displacement: **200cm³**

No Load Speed: **2950/min**

Cutting Width: **501mm**

Mass in kg: **41.6kg**

Conforms to the main safety requirements of the EC Directives listed above.

This conformity is based on the following standards and normative documents:

2006/42/EC/Annex I

EN 836: 1997+A1+A2+A3+AC

06/42/EC - Annex I/05.06

Sound Pressure Level: 82.4dB(A), K=3dB(A)

Guaranteed L_{WA}: 96dB(A)

The responsible person, based with in the EC, is identified below:

Name: Mr Simon Belcher

Title: Managing Director

Company: Handy Distribution Ltd

Address: Hobley Drive, Stratton St Margaret, SWINDON, Wiltshire. SN3 4NS

Signature:



Date: 15th Feb, 2010

Spares & Support: 01793 333212

