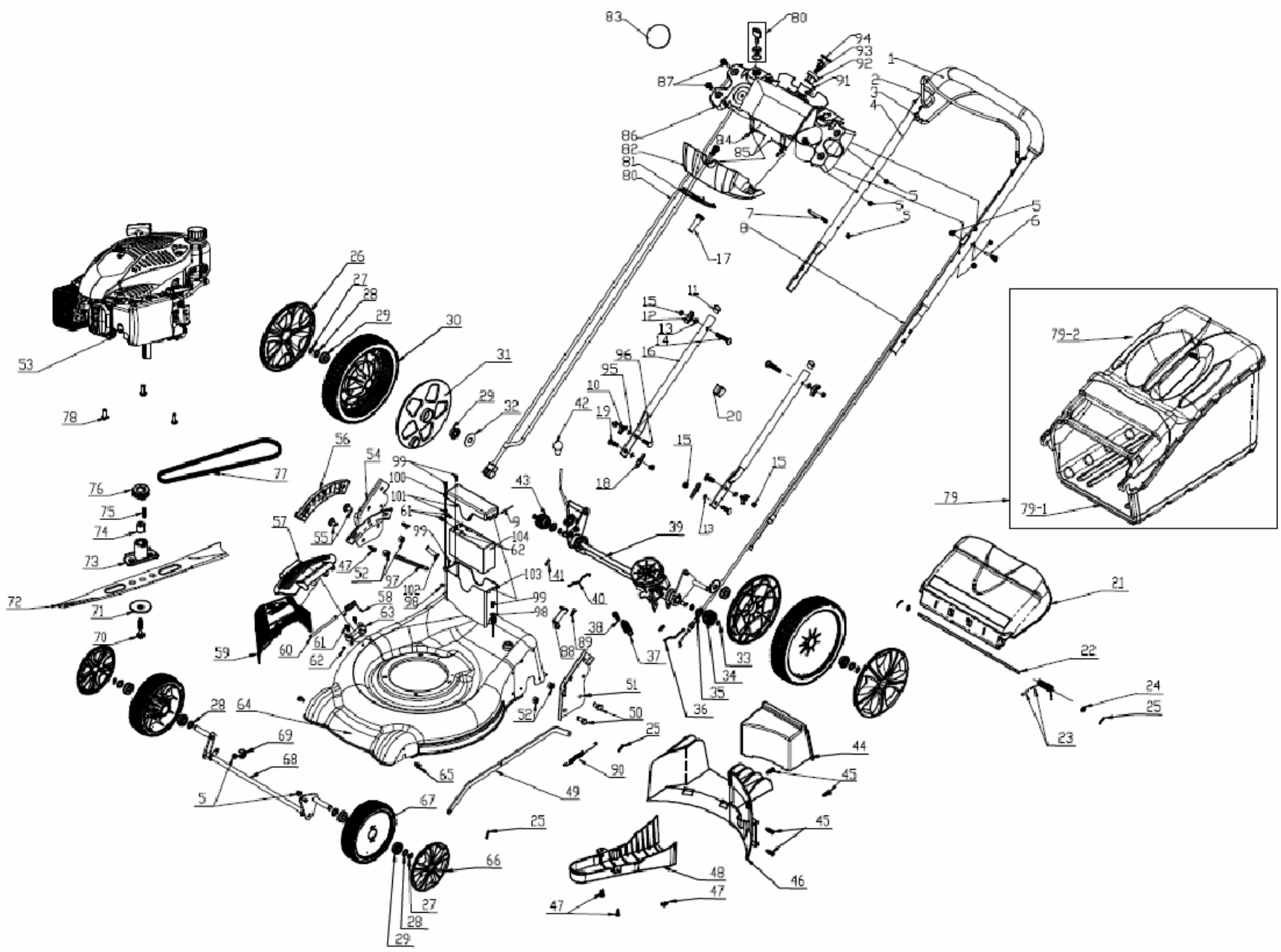


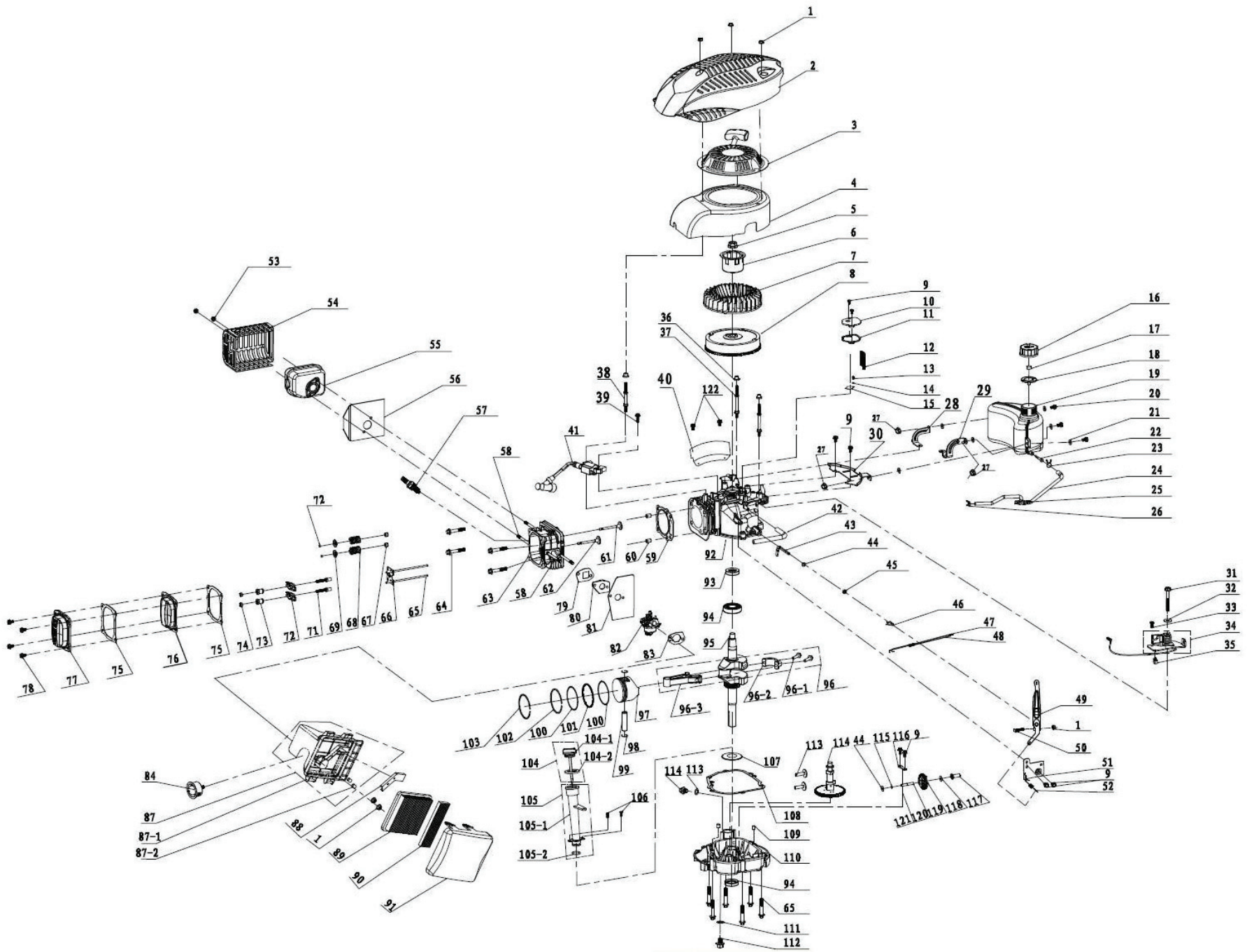
PARTS DIAGRAM



PARTS LIST

No.	Part No.	Description	QTY	No	Part No.	Description	QTY	No	Part No.	Description	QTY
1	QG105-01	Foam Pipe	1	36	QG105-36	Left Steel Wire Spring	1	71	QG105-71	Blade Washer	1
2	QG105-02	Brake Lever	1	37	QG105-37	Self-propel Cable Spring	1	72	QG105-72	510 Blade B	1
3	QG105-03	Drive Lever	1	38	QG105-38	Self-propelled Spring	1	73	QG105-73	Short Bush Blade Adapter	1
4	QG105-04	Upper Handle for Dash Board	1	39	QG105-39	S/P Rear Drive Shaft Assy	1	74	QG105-74	Short Bush for Blade Adapter	1
5	QG105-05	Hex Locknut M6/8.8	8	40	QG105-40	Right Steel Wire Spring	1	75	QG105-75	Long Key for Crankshaft	1
6	QG105-06	Hex Flange Bolt M6x35/8.8	1	41	QG105-41	Pin	2	76	QG105-76	Small Belt Wheel	1
7	QG105-07	Rope Guide	1	42	QG105-42	Height Adj Handle Ball	1	77	QG105-77	V Type Belt	1
8	QG105-08	Brake & Self-propelled Cable	1	43	QG105-43	Small Ratchet Gear Right	1	78	QG105-78	Hex Bolt M10x25/8.8	3
9	QG105-09	Shaft for Battery Box	1	44	QG105-44	Mulching Plug	1	79	QG105-79	Grassbox Assembly	1
10	QG105-10	Knob	2	45	QG105-45	Cross Head Tapping Screw	4	79-1	QG105-79-1	60L Grassbox Bag	1
11	QG105-11	Plug for Handle	2	46	QG105-46	Rear Baffle	1	79-2	QG105-79-2	Grassbox Cover	1
12	QG105-12	Knob	2	47	QG105-47	Cross Head Tapping Screw	5	80	QG105-80	Starter	1
13	QG105-13	Flat Washer/ Φ8.4xΦ16x1.6	4	48	QG105-48	Belt Cover	1	81	QG105-81	Dash Board	1
14	QG105-14	Carriage Bolt M8x50/8.8	2	49	QG105-49	Height Adj Pull Rod	1	82	QG105-82	Upper Cover for Dash Board	1
15	QG105-15	Hex Nut M8/8.8	6	50	QG105-50	Hex Bolt M8×16/8.8	2	83	QG105-83	Circle Cover for Dash Board	1
16	QG105-16	B Type Lower Handle	2	51	QG105-51	Left Side Board	1	84	QG105-84	Spring for Cover	2
17	QG105-17	Fastener	1	52	QG105-52	Hex Locknut M8/8.8	4	85	QG105-85	Shaft for Cover	2
18	QG105-18	Thin Knob	2	53	QG105-53	T675 Engine	1	86	QG105-86	Dash Board Pedestal	1
19	QG105-19	Bolt M8X30/8.8	2	54	QG105-54	Right Side Board	1	87	QG105-87	Hex Bolt M6X28/8.8	4
20	QG105-20	Fastener	1	55	QG105-55	Carriage bolt M8X15/8.8	2	88	QG105-88	Board for Rear Discharge	1
21	QG105-21	Rear Discharge Cover	1	56	QG105-56	Board for Height Adjuster	1	89	QG105-89	Cross Head Tapping Screw	1
22	QG105-22	Rear Discharge Cover Shaft	1	57	QG105-57	Mulching Board	1	90	QG105-90	Spring for Pull Rod	1
23	QG105-23	Rear Discharge Cover Spring	1	58	QG105-58	Mulch Spring	1	91	QG105-91	Cross Head Tapping Screw	1
24	QG105-24	Lock Washer	2	59	QG105-59	Side Discharge Cover	1	92	QG105-92	Starter Button Housing	1
25	QG105-25	Pin	4	60	QG105-60	Mulch Shaft	1	93	QG105-93	Spring for Button	1
26	QG105-26	10" Outer Wheel Trim	2	61	QG105-61	Hex Bolt M5X10/8.8	4	94	QG105-94	Button	1
27	QG105-27	Flexible Washer	6	62	QG105-62	Hex Locknut M5/8.8	4	95	QG105-95	Flat Washer	2
28	QG105-28	Washer /Φ13xΦ20x1.5	6	63	QG105-63	Bracket Press Board	1	96	QG105-96	Carriage Bolt M8x25/8.8	2
29	QG105-29	Punching Bearing	8	64	QG105-64	Deck	1	98	QG105-98	Flat Washer	2
30	QG105-30	10" Wheel Assy	2	65	QG105-65	Hex Bolt M6X12/8.8	2	99	QG105-99	Cross Head Tapping Screw	4
31	QG105-31	10" Inner Wheel Trim	2	66	QG105-66	7" Outer Wheel Trim	2	100	QG105-100	Battery Cover	1
32	QG105-32	Washer Φ39.3xΦ13.1x1	2	67	QG105-67	7" Wheel Assy	2	101	QG105-101	Hex Locknut M4/8.8	4
33	QG105-33	Flexible Washer	2	68	QG105-68	Front Drive Shaft Assy	1	102	QG105-102	Fastener	1
34	QG105-34	Small Ratchet Gear Left	1	69	QG105-69	Front Bracket Fastener	1	103	QG105-103	Battery Housing	1
35	QG105-35	Ratchet Gear Washer	2	70	QG105-70	Hex Flange Face Bolt A	1	104	QG105-104	Battery	1

PARTS DIAGRAM - ENGINE



PARTS LIST - ENGINE

No.	Part No.	Description	QTY	No	Part No.	Description	QTY	No	Part No.	Description	QTY
1	QG184-1	Nut M6	6	42	QG184-42	Waste Air Pipe	1	82	QG184-82	Carburettor Assy	1
2	QG184-2	Engine Cover	1	43	QG184-43	Speed Regulator Spindle	1	83	QG184-83	Steel Gasket	1
3	QG184-3	Recoil Start Assy	1	44	QG184-44	Flat Washer	1	84	QG184-84	Prime Button	1
4	QG184-4	Blower Housing	1	45	QG184-45	Oil Seal 6x11x4	1	87	QG184-87	Air Filter Pedestal	1
5	QG184-5	Nut M14 X1.5	1	46	QG184-46	Springness Split Pin	1	87-1	QG184-87-1	Air Filter Bush	2
6	QG184-6	Start-up Hub	1	47	QG184-47	Handspike of Valve	1	87-2	QG184-87-2	Washer	1
7	QG184-7	Fan	1	48	QG184-48	Pull Spring of Valve	1	88	QG184-88	Exhaust Gas Cover Board	1
8	QG184-8	Flywheel Assy	1	49	QG184-49	Speed Regulator Rocker	1	89	QG184-89	Paper Filter Element	1
9	QG184-9	BoltM6X12	8	50	QG184-50	T Type Bolt M6x23	1	90	QG184-90	Foam Filter Element	1
10	QG184-10	respirator cover plate	1	51	QG184-51	Speed Regulator Board	1	91	QG184-91	Air Filter Upper Cover	1
11	QG184-11	Gasket of Respirator Cover	1	52	QG184-52	Speed Regulator Pull Spring	1	92	QG184-92	Crankcase Assy	1
12	QG184-12	Lubricate Filtering Net	1	53	QG184-53	Nut M6	2	93	QG184-93	Oil Seal	2
13	QG184-13	Bolt M3 X 6	1	54	QG184-54	Muffler Cover Assy	1	94	QG184-94	Ball Bearing 6205	1
14	QG184-14	Spring gasket 3	1	55	QG184-55	Muffler Assy	1	95	QG184-95	Crankshaft Assy	1
15	QG184-15	Valve Cover	1	56	QG184-56	Exhaust Gasket	1	96	QG184-96	Connecting Rod Assy	1
16	QG184-16	Fuel Tank Cap	1	57	QG184-57	Spark Plug	1	97	QG184-97	Piston	1
17	QG184-17	Fuel Tank Cap Sponge	1	58	QG184-58	Two Stud Bolt M6x94	4	98	QG184-98	wrist pin ring	2
18	QG184-18	Fuel Tank Cap Gasket	1	59	QG184-59	Cylinder Head Gasket	1	99	QG184-99	Piston Pin	1
19	QG184-19	Fuel Tank	1	60	QG184-60	Cylinder Head Locating Pin	2	100	QG184-100	Doctor-bar ring	2
20	QG184-20	Bolt M6x22	3	61	QG184-61	Intake Valve	1	101	QG184-101	Bushing Ring	1
21	QG184-21	Cushion Blocking	6	62	QG184-62	Exhaust Valve	1	102	QG184-102	Piston Ring II	1
22	QG184-22	Filtering Net Duct of Fuel	1	63	QG184-63	Cylinder Head Assy	1	103	QG184-103	Piston Ring I	1
23	QG184-23	Oil Pipe Circlip I	1	64	QG184-64	Bolt M8x50	10	104	QG184-104	Rubber Seal Gasket	1
24	QG184-24	Oil Pipe	1	65	QG184-65	Handspike	2	105	QG184-105	"O" Ring 20x2.6	1
25	QG184-25	Twisting Clip	1	66	QG184-66	Guide Board of Handspike	1	106	QG184-106	Screw M4X12	2
26	QG184-26	Oil Pipe Circlip II	1	67	QG184-67	Oil Seal Assembled of Valve	2	107	QG184-107	Gear Gasket	1
27	QG184-27	Locknut M6	3	68	QG184-68	Spring of Valve	2	108	QG184-108	Seal Gasket of Crankcase	1
28	QG184-28	Right Bracket of Fuel Tank	1	69	QG184-69	Spring Coil of Exhaust Valve	2	109	QG184-109	Dowel Pin	2
29	QG184-29	Left Bracket of Fuel Tank	1	70	QG184-70	valve hood	2	110	QG184-110	Crankcase Cover	1
30	QG184-30	Main Bracket of Fuel Tank	1	71	QG184-71	Rocker Support Bolt of Valve	2	111	QG184-111	Flat Washer	2
31	QG184-31	Bolt	1	72	QG184-72	Rocker of Valve	2	112	QG184-112	Bolt	2
32	QG184-32	Flat Washer	1	73	QG184-73	Adjust Nut of Valve	2	113	QG184-113	Pin	2
33	QG184-33	Bolt	1	74	QG184-74	Combined Nut	2	114	QG184-114	Camshaft Assy	1
34	QG184-34	Detent Assy	1	75	QG184-75	Cylinder Head Cover Gasket	2	115	QG184-115	Circlip of Gear Shaft	1
35	QG184-35	Detent Bush	2	76	QG184-76	Cylinder Head Cover I	1	116	QG184-116	Gear Shaft Hold-down Plate	1
36	QG184-36	Blower Housing Bush	3	77	QG184-77	Cylinder Head Cover II	1	117	QG184-117	Sliding Sleeve	1
37	QG184-37	Abnormity Two Stud Bolt II	2	78	QG184-78	Bolt M6x14	4	118	QG184-118	Flat Washer	1
38	QG184-38	Abnormity Two Stud Bolt I	1	79	QG184-79	Air Inlet Pipe Paper Gasket I	1	119	QG184-119	Gear Shaft Assy	1
39	QG184-39	Bolt M6X25	1	80	QG184-80	Air Inlet Pipe	1	120	QG184-120	Gear Shaft of speed limit	1
40	QG184-40	Baffle	1	81	QG184-81	Air Inlet Pipe Paper Gasket II	1	121	QG184-121	Columnar Pin 2x8	1
41	QG184-41	Ignition Assy	1					122	QG184-122	Bolt M6x16	2